

SUNWOOD SERIES
SINGLE-SECTION



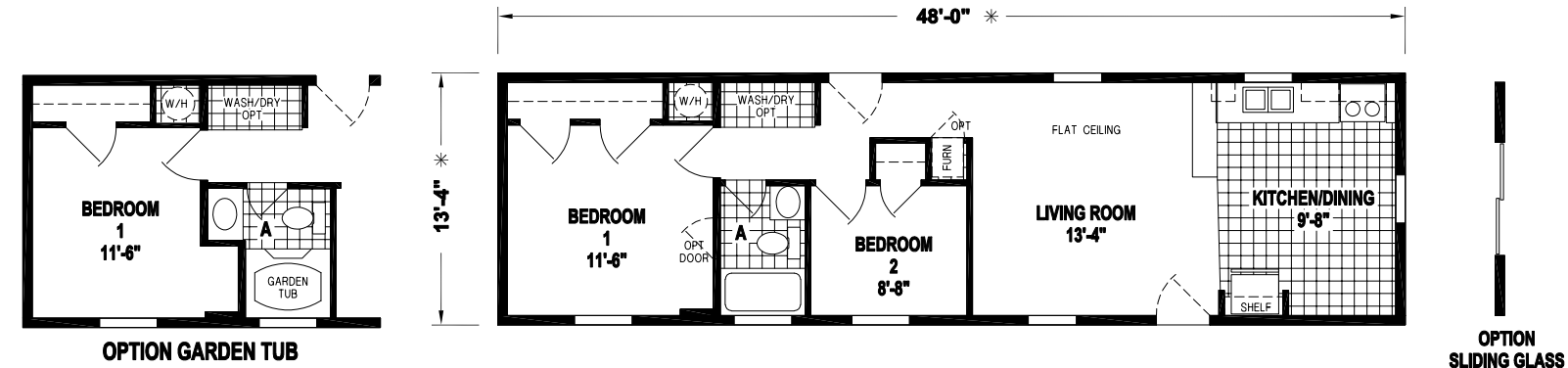
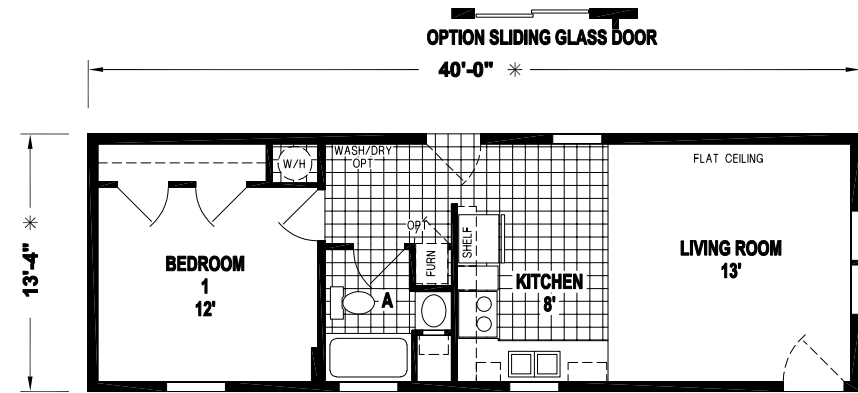
SUNWOOD SERIES SINGLE-SECTION

The Sunwood Series has been designed to reflect the needs of families through high-end craftsmanship and quality – with affordable amenities and distinctive design details. Manufactured in Leola, Pennsylvania and backed by over 65 years of manufacturing experience and stellar customer service – take a look for yourself to see why the Sunwood Series by Skyline Homes is the right decision for you and your family.



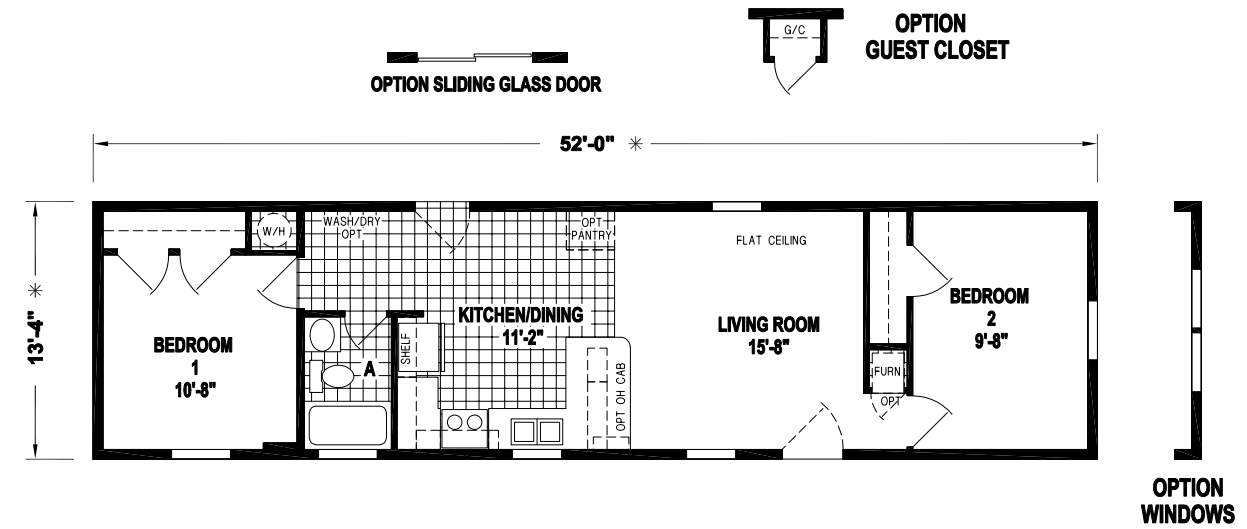
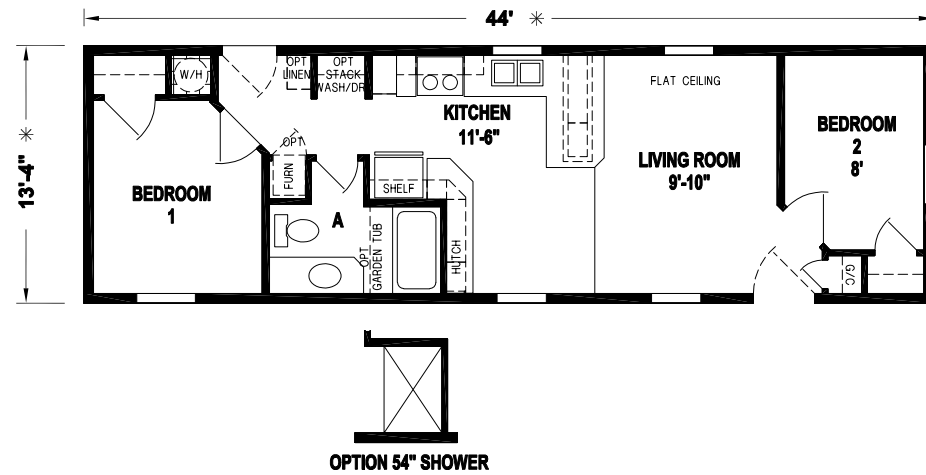
**SUNWOOD
F 2 2 3 S**

1 BED-1 BATH
533 SQ.FT.



**SUNWOOD
F 2 4 0 B**

2 BED-1 BATH
587 SQ.FT.

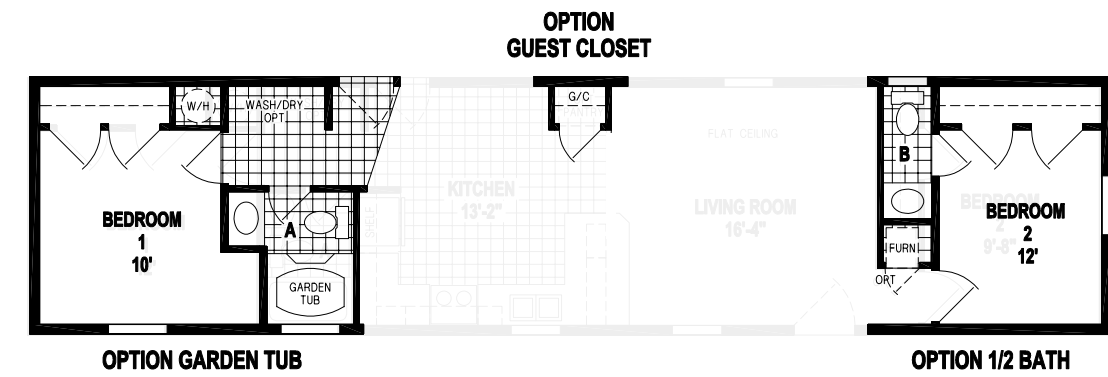
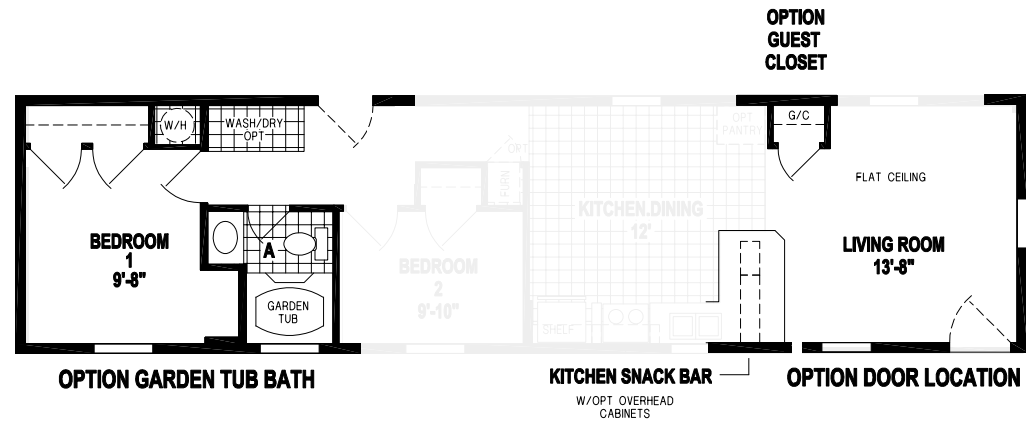
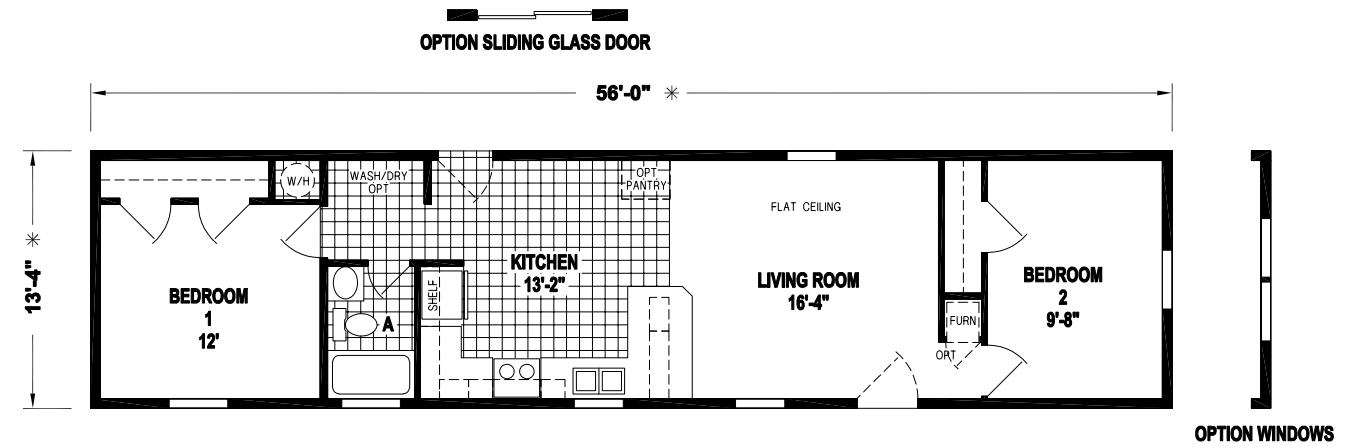
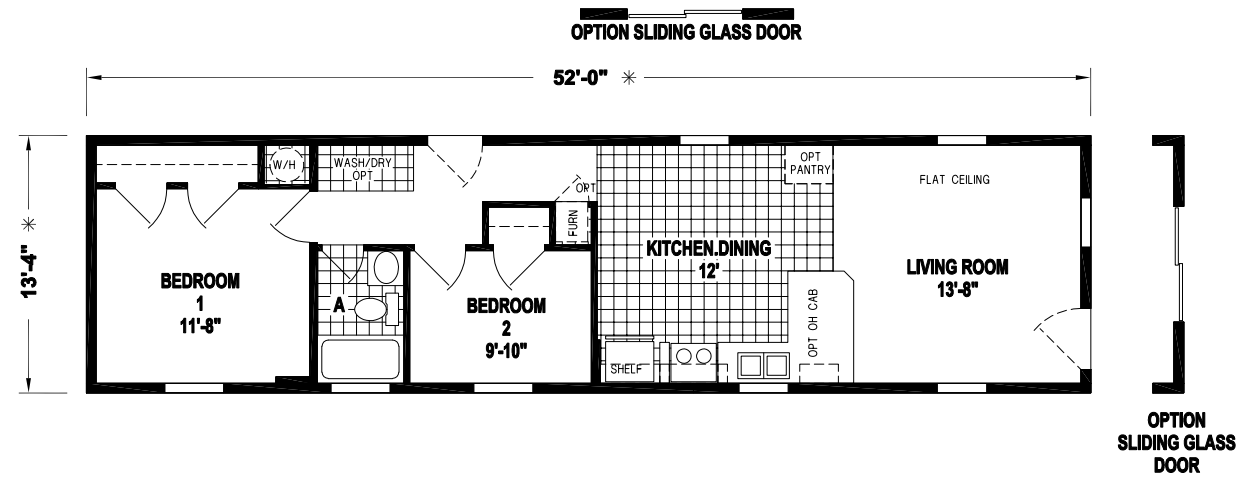


**SUNWOOD
F 2 3 0 B**

2 BED-1 BATH
640 SQ.FT.

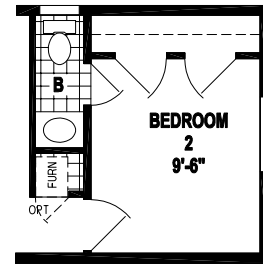
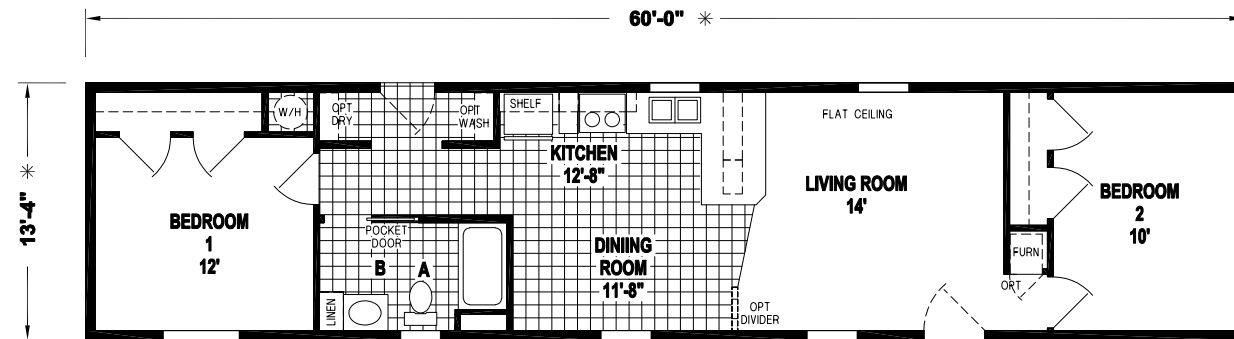
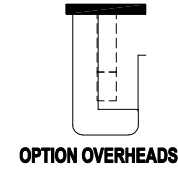
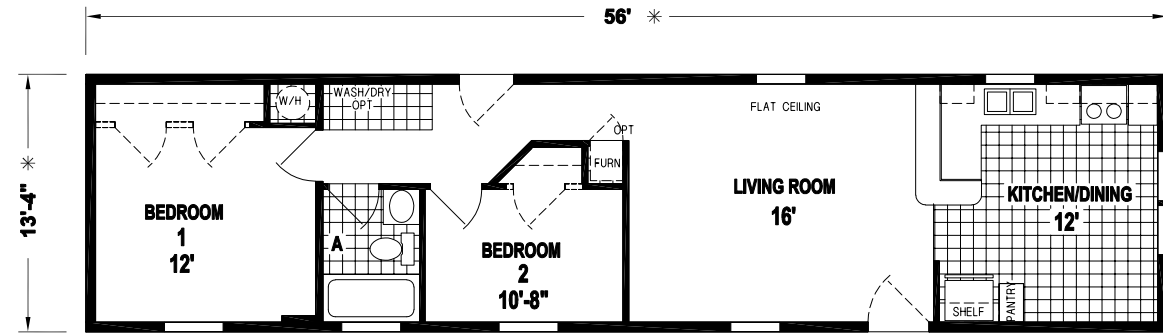
**SUNWOOD
F 2 1 8 B**

2 BED-1 BATH
693 SQ.FT.



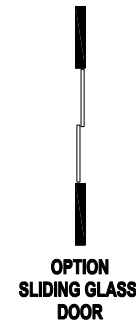
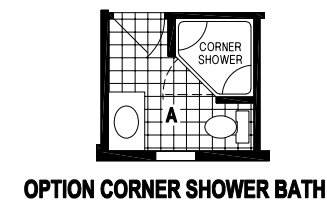
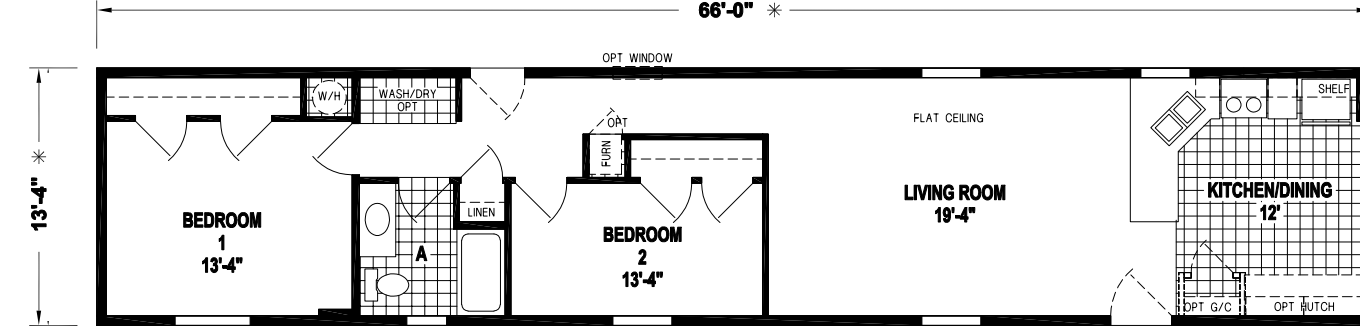
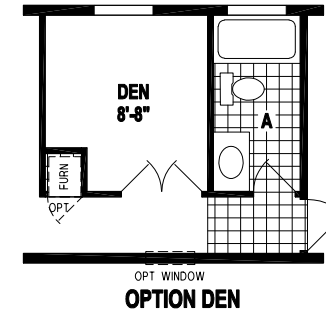
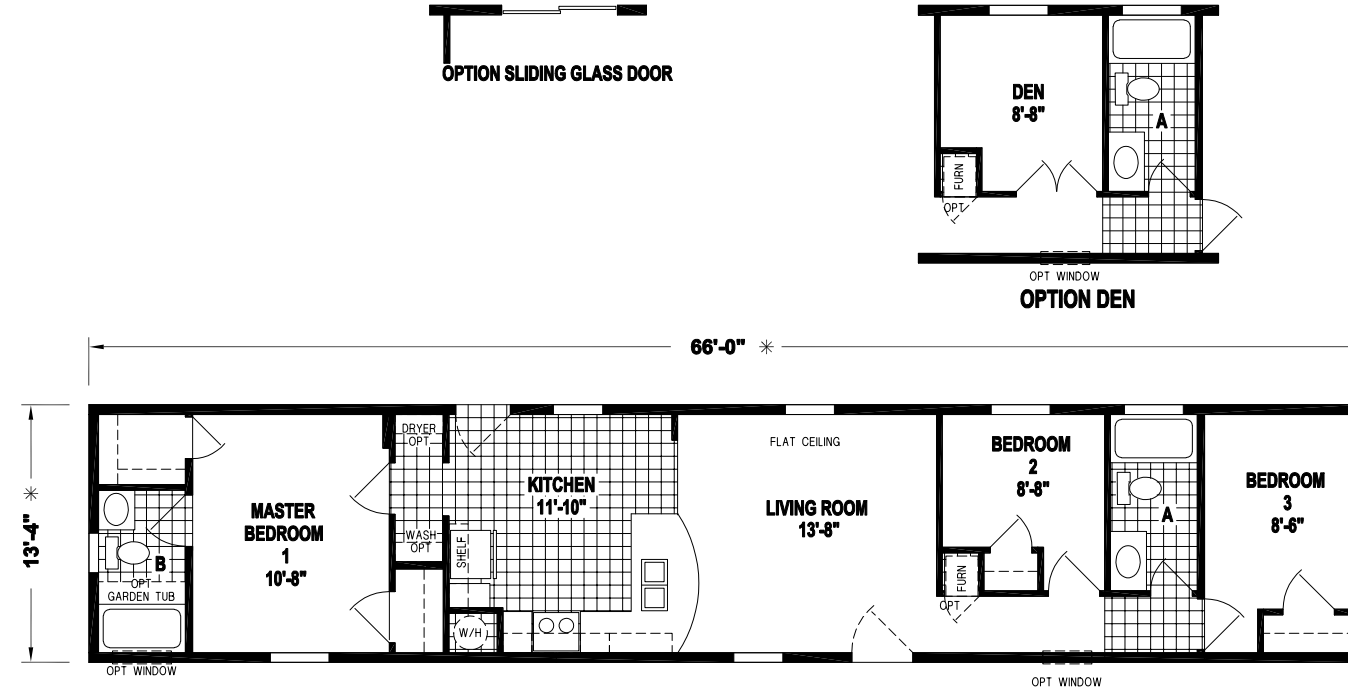
**SUNWOOD
F 203 B**

2 BED-1 BATH
746 SQ.FT.



**SUNWOOD
F 205 B**

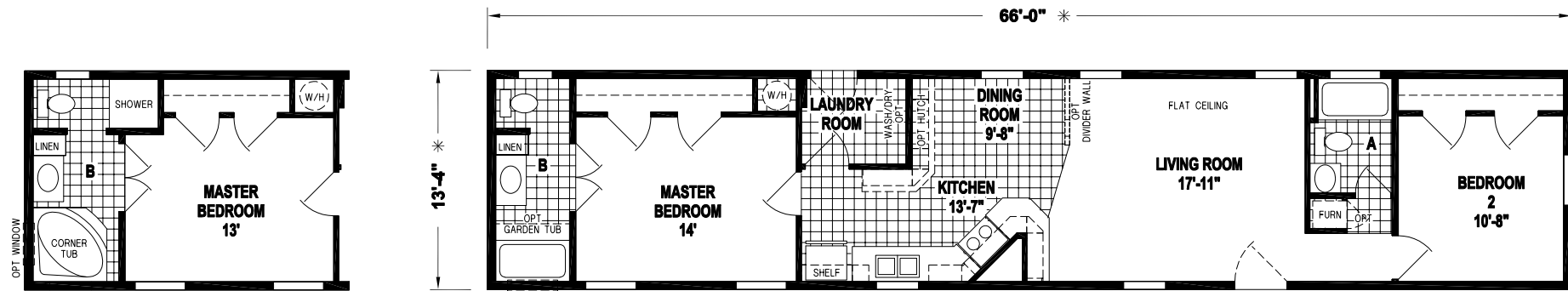
3 BED-2 BATH
880 SQ.FT.



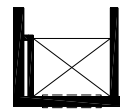
**SUNWOOD
F 210 B**

2 BED-1 BATH
880 SQ.FT.

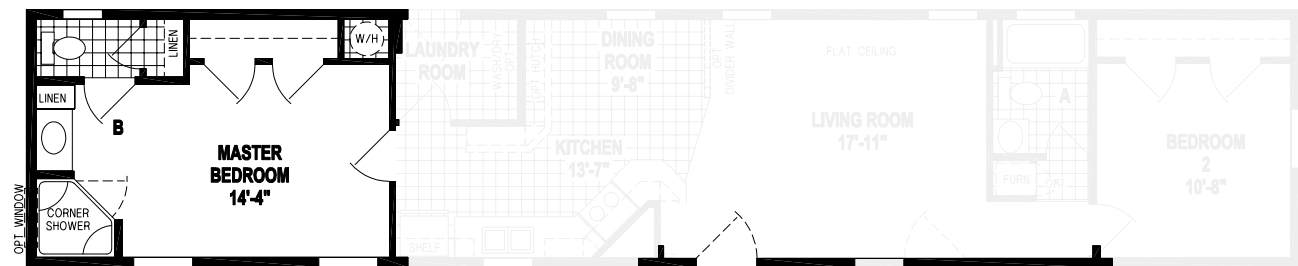
OPTION SLIDING GLASS DOOR



OPTION CORNER TUB BATH



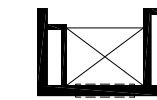
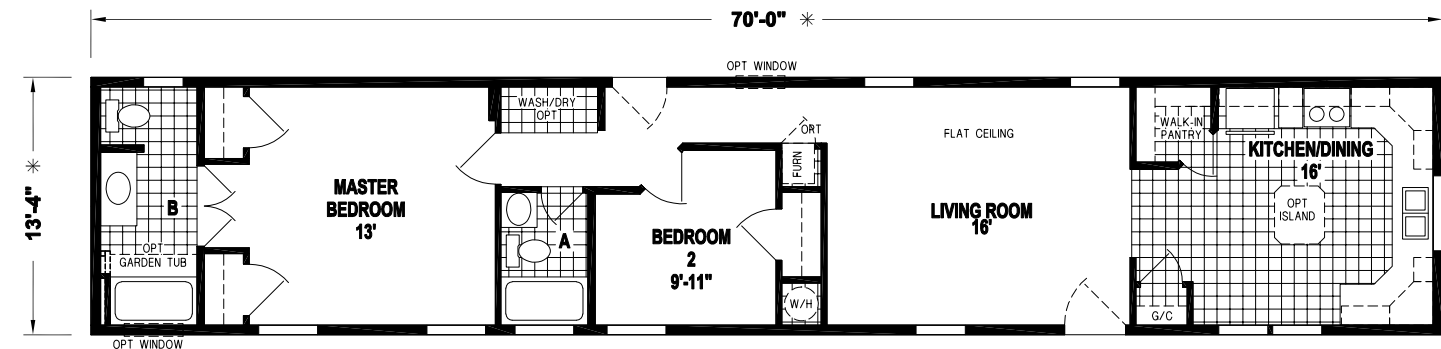
OPTION
48" SHOWER



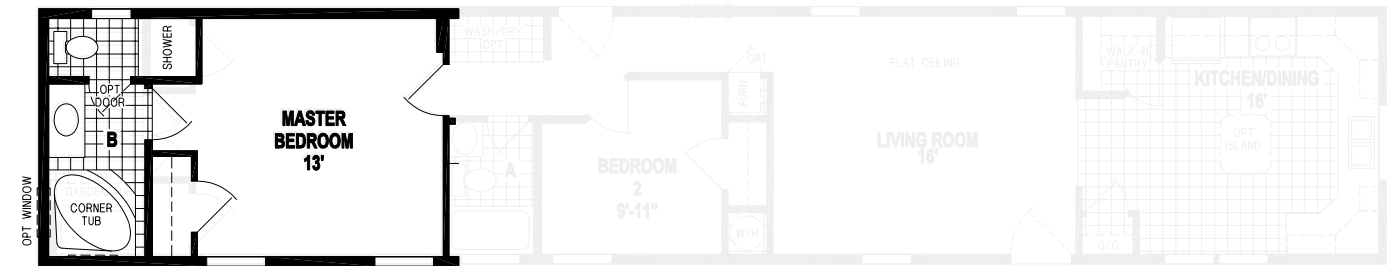
OPTION CORNER SHOWER BATH

ALTERNATE DOOR LOCATION

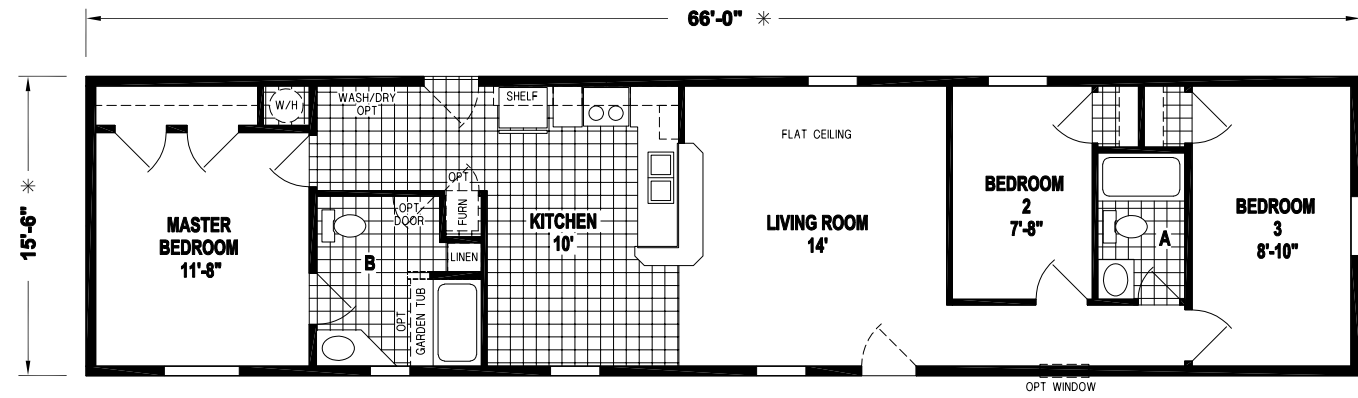
OPTION SLIDING GLASS DOOR



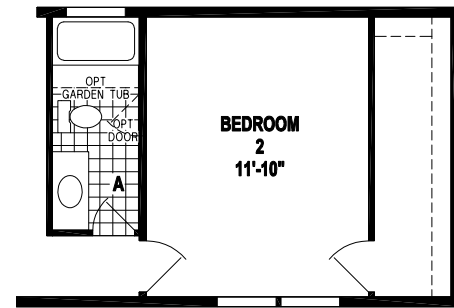
OPTION 48" SHOWER



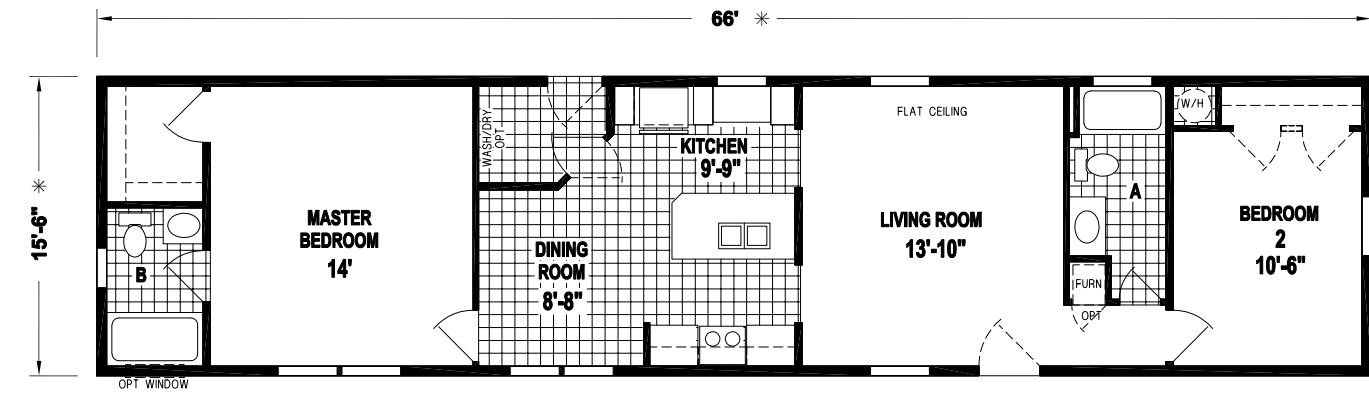
OPTION CORNER TUB BATH



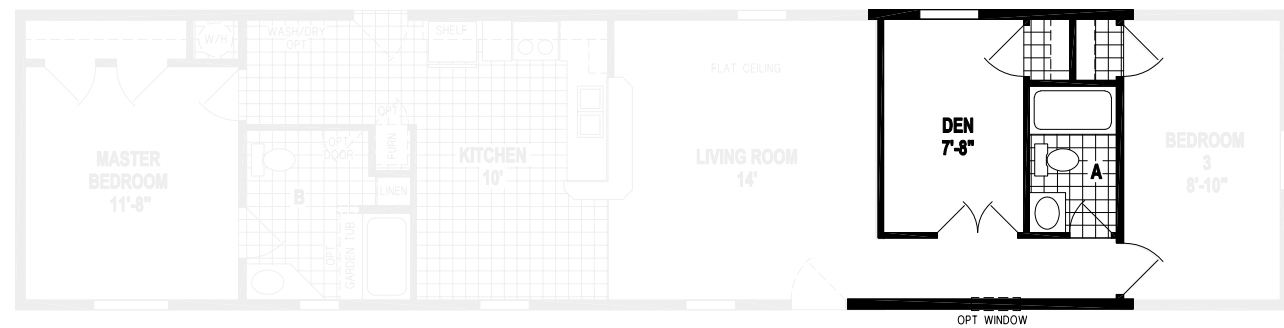
OPTION SLIDING GLASS DOOR



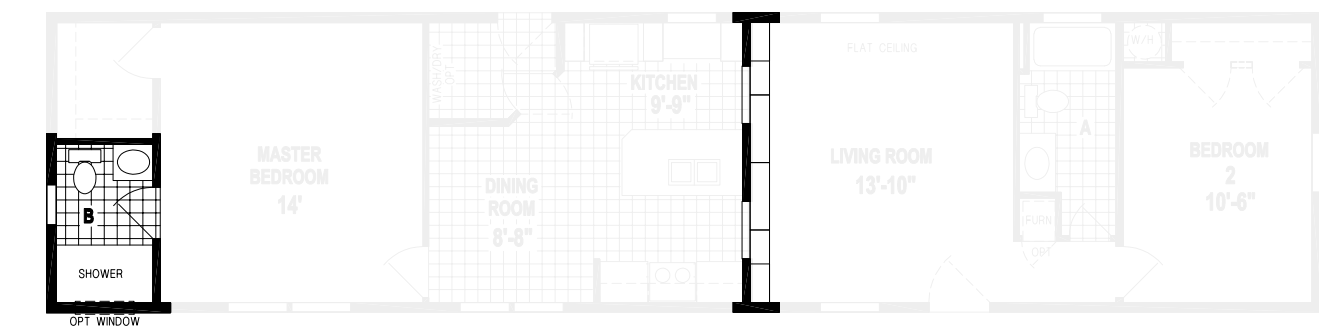
OPTION 2 BEDROOM CONFIGURATION



OPTION SLIDING GLASS DOOR

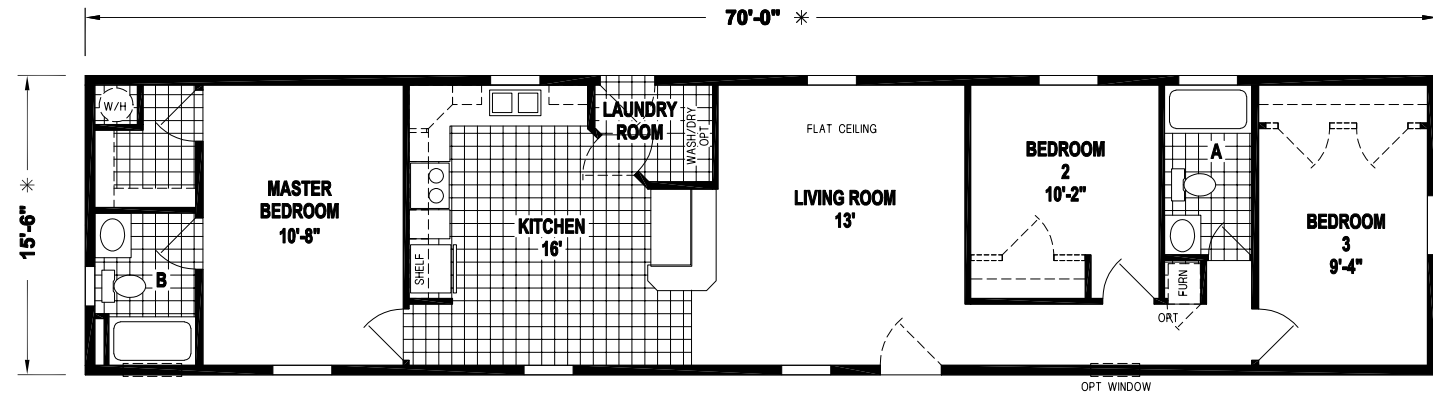


OPTION DEN

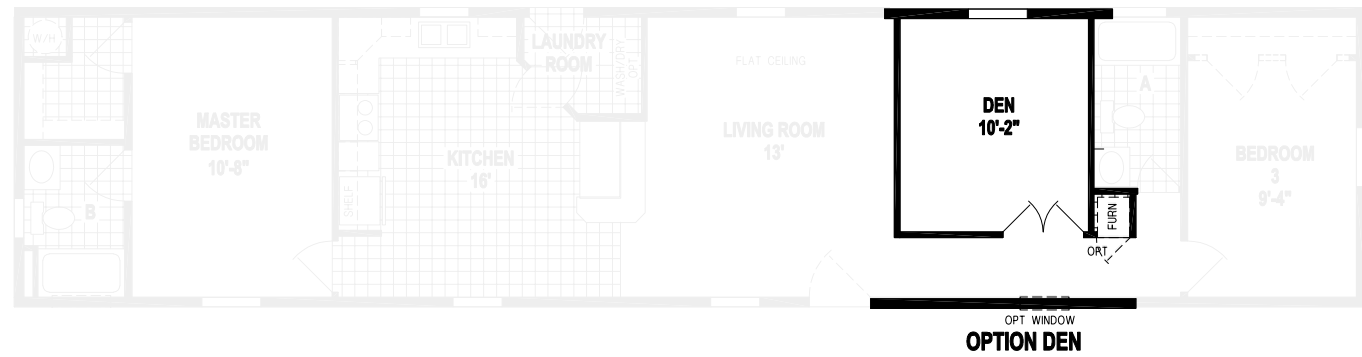


OPTION 60" SHOWER

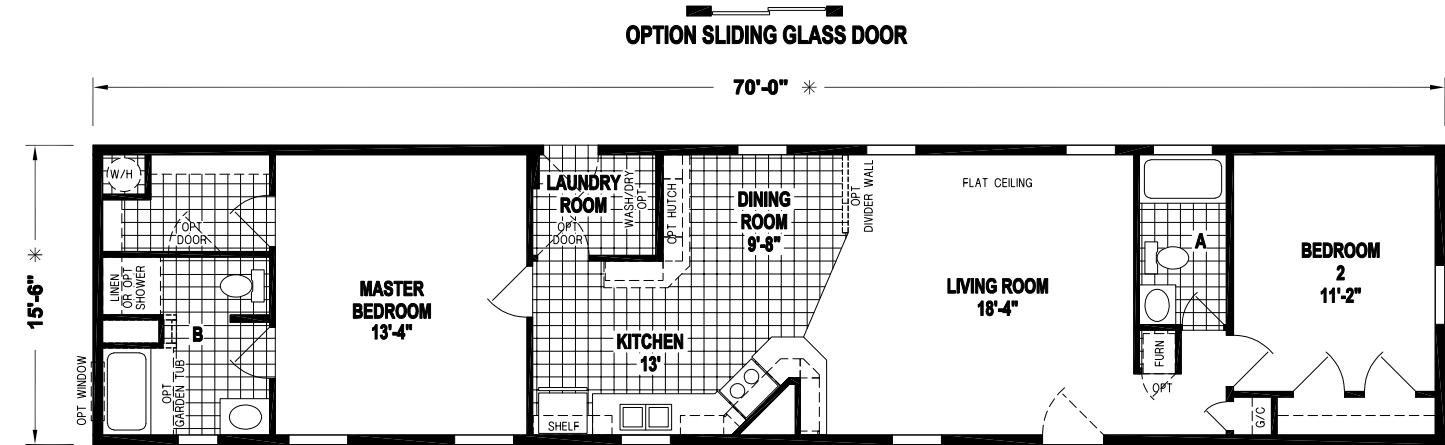
OPTION BOOKCASE/
ENTERTAINMENT CENTER



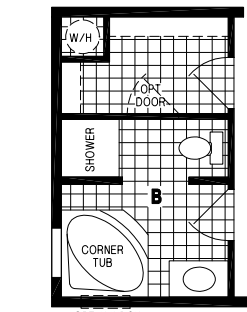
OPTION SLIDING GLASS DOOR



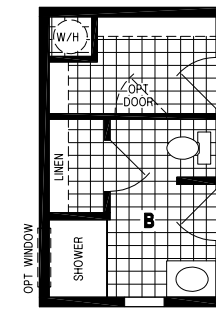
OPTION DEN



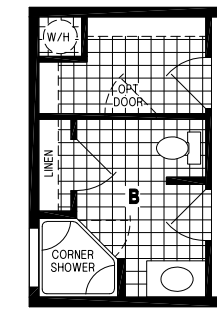
OPTION SLIDING GLASS DOOR



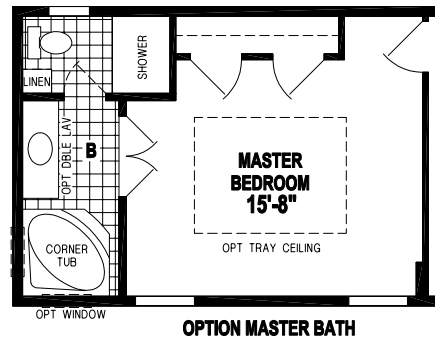
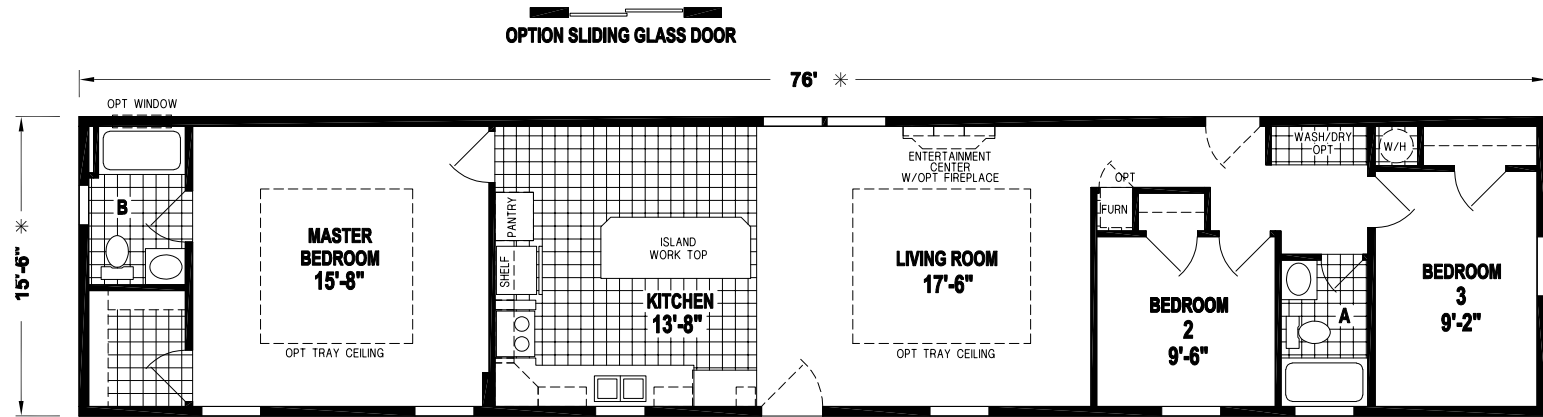
OPTION CORNER TUB BATH



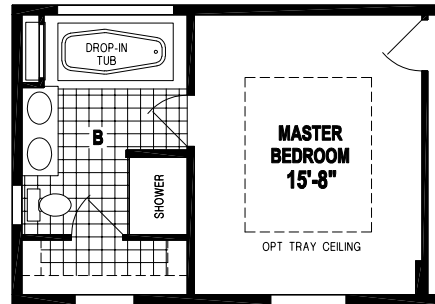
OPTION MASTER BATH



OPTION CORNER SHOWER BATH

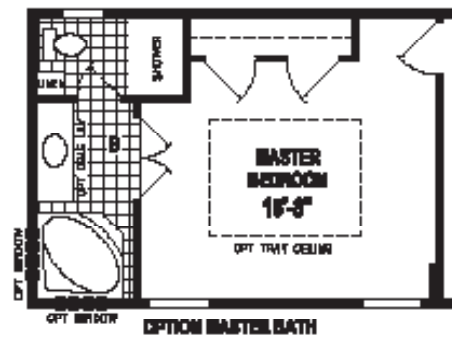
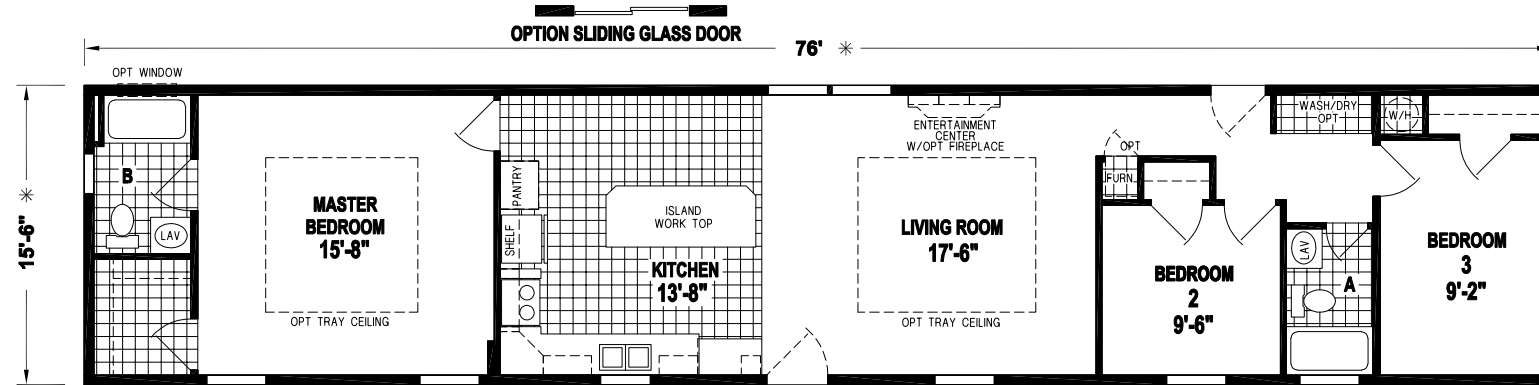


OPTION MASTER BATH

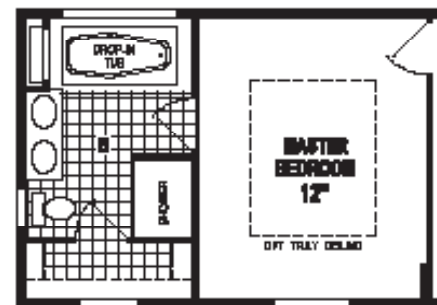


OPTION DROP-IN TUB BATH

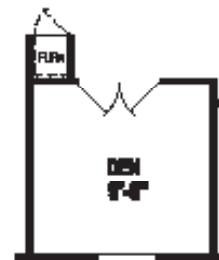




OPTIONAL MASTER BATH



OPTIONAL DROP-IN TUB BATH



OPTIONAL DEN

CONSTRUCTION

- 2x6 Sidewall, 16" O.C.
- 2x6 Floor Joists, 16" O.C. (14' wide)
- 2x8 Floor Joists, 16" O.C. (16' wide)
- 8'-0" Sidewall Height
- Shingled Roof w/25-Year Shingles
- Flat Ceiling Throughout
- Code Insulation
- Front & Rear Hood

EXTERIOR

- Vinyl Double Dutch 4" Lap Siding
- Smooth Fiberglass Front Door w/Sunburst Window
- Smooth Fiberglass 9-Lite Rear Door
- Deadbolt Front & Rear Door w/Keyed Alike Hardware
- Vinyl Single-Hung Windows
- Window Grids
- Egress Windows in Bedrooms
- 15" Raised Panel Shutters - Door Side / Hitch End
- Exterior Light at All Exterior Doors
- Detachable Hitch

HEATING/UTILITY

- 30 Gallon Electric Water Heater w/Dual Element
- Gas Furnace
- 100 Amp Service Entrance
- Iron Gas Piping w/Shut-off Valves
- Copper Wiring

PLUMBING/ELECTRICAL

- LED Recessed Lights
- Strip Lights in Bathrooms
- Lighted Power Vent Fan in Bathrooms
- CO²/Smoke Detector w/Battery Backup & False Alarm Control
- Exterior Receptacle w/GFI Breaker
- Electrical Breaker Box
- Water Shut-Off Valve at All Fixtures
- PEX™ Water Lines
- Wire For Dryer

INTERIOR

- Carpet and Pad w/Tack Strips Throughout
- Drapes w/Mini Blinds in Living Room & Master Bedroom
- Valance w/Mini Blinds in Kitchen and Guest Bedrooms
- Upgrade LUX™ Vinyl Floor in Kitchen and Bathrooms
- 36x8 Window Where Applicable (Bathrooms)
- 24x40 Window Where Applicable (Bathrooms)
- Lever Latch Door Handles
- White Painted Real Wood Molding Throughout

KITCHEN

- Cabinet Doors w/Residential Hidden Hinges: Raised Panel Grey, Raised Panel White, Flat Panel Maple, Flat Panel Chocolate
- Solid Wood Face Frames
- 42" Overhead Cabinets
- Soft-Close Drawers
- Lined Overhead & Base Cabinets
- 3/4" Adjustable Shelves
- Box Built Cabinets
- 2nd Shelf Kitchen Base
- 8" Deep Stainless Steel Sink w/Single-Lever Faucet & Sprayer
- Shelf Above Refrigerator

APPLIANCES

- 18 Cu. Ft. Double Door Frost-Free Refrigerator
- 30" Deluxe Range w/Range Hood

BATHROOM(S)

- Cabinet Doors w/Residential Hidden Hinges: Raised Panel Grey, Raised Panel White, Flat Panel Maple, Flat Panel Chocolate
- Solid Wood Face Frames
- Decorative Mirror w/Swiped Edges
- Privacy Locks
- China Sink w/Overflow & Pop-Up Drain
- Elongated China Commodes
- Single-Lever Tub & Shower Diverters
- 36" Raised Lavs - Both Baths
- 1-Piece Tub/Shower (per plan)
- 1-Piece Bar & Tissue Holders

Due to continuous product development and improvement, prices, specifications, and materials are subject to change without notice or obligation. Square footage and other dimensions are approximate. Exterior images may be artist renderings and are not intended to be an accurate representation of the home. Renderings, photos and floor plans may be shown with optional features or third-party additions.

Member:



SKYLINE®

Built in Leola, PA