



SKYLINE



SUNWOOD SERIES
MULTI-SECTION

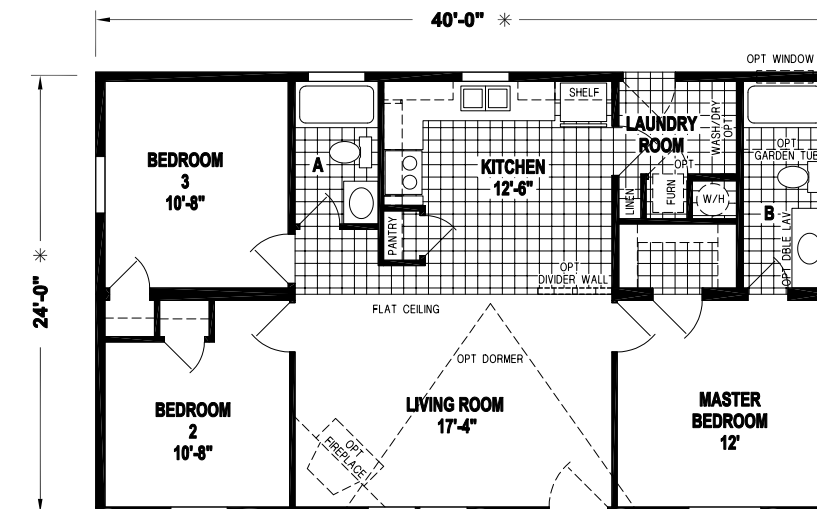
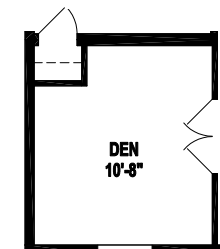
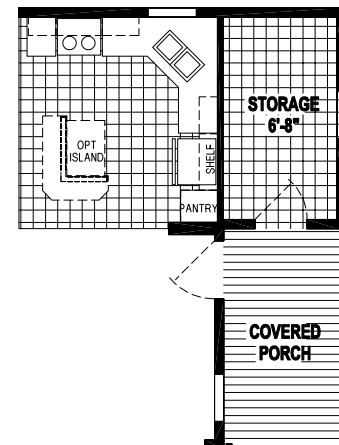
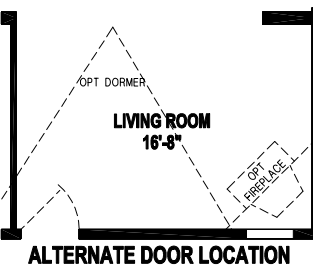
SUNWOOD SERIES

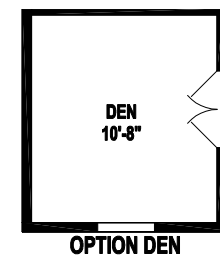
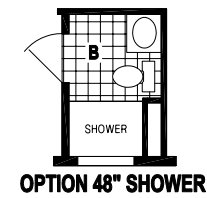
MULTI-SECTION

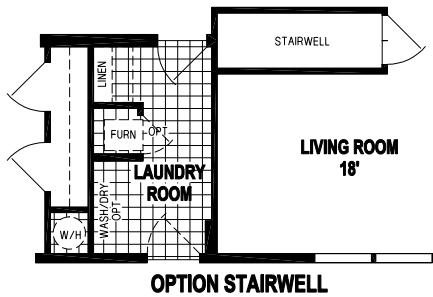
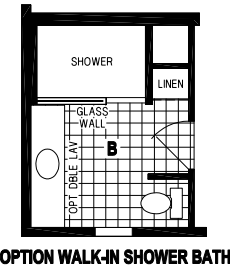
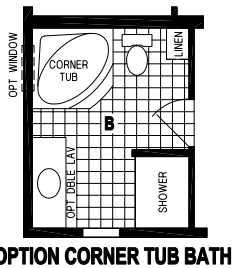
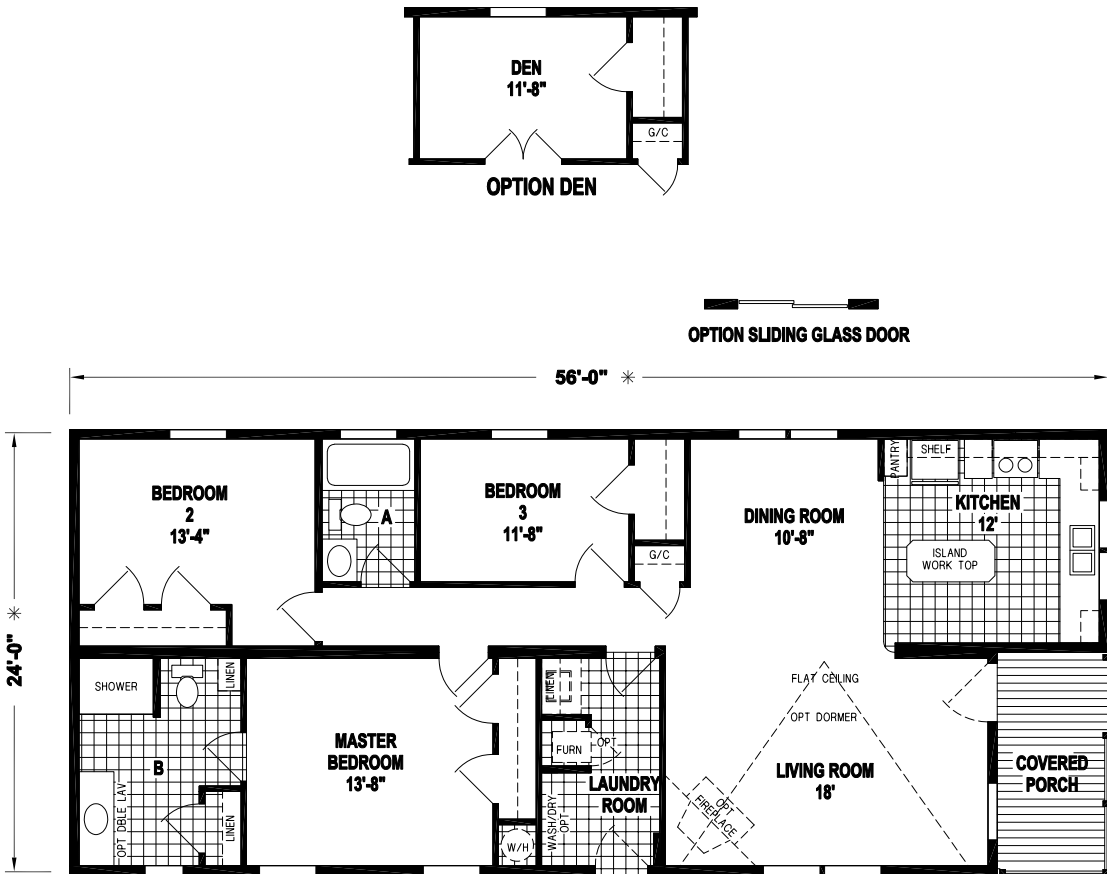
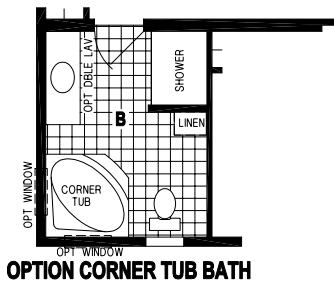
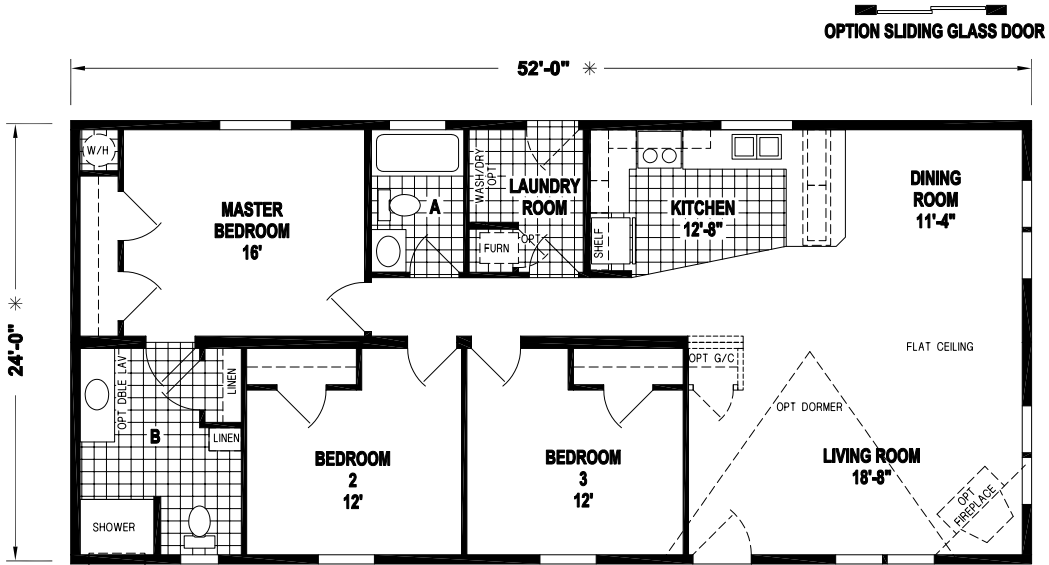
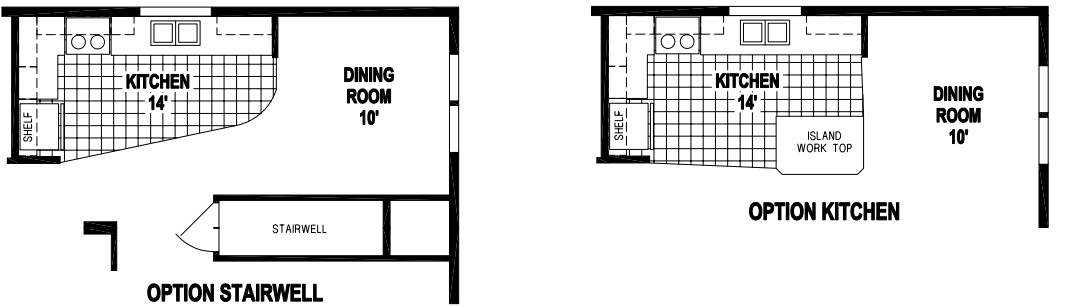
Living is easy in the generously spacious Sunwood Series by Skyline Homes. The open floor plans and variety of options feature spacious living areas, bedrooms and stylish gourmet kitchens that flow through to dining rooms. Beautiful finishing elements such as tile backsplashes and high-end appliances highlight the Sunwood Series and set it apart from the competition.

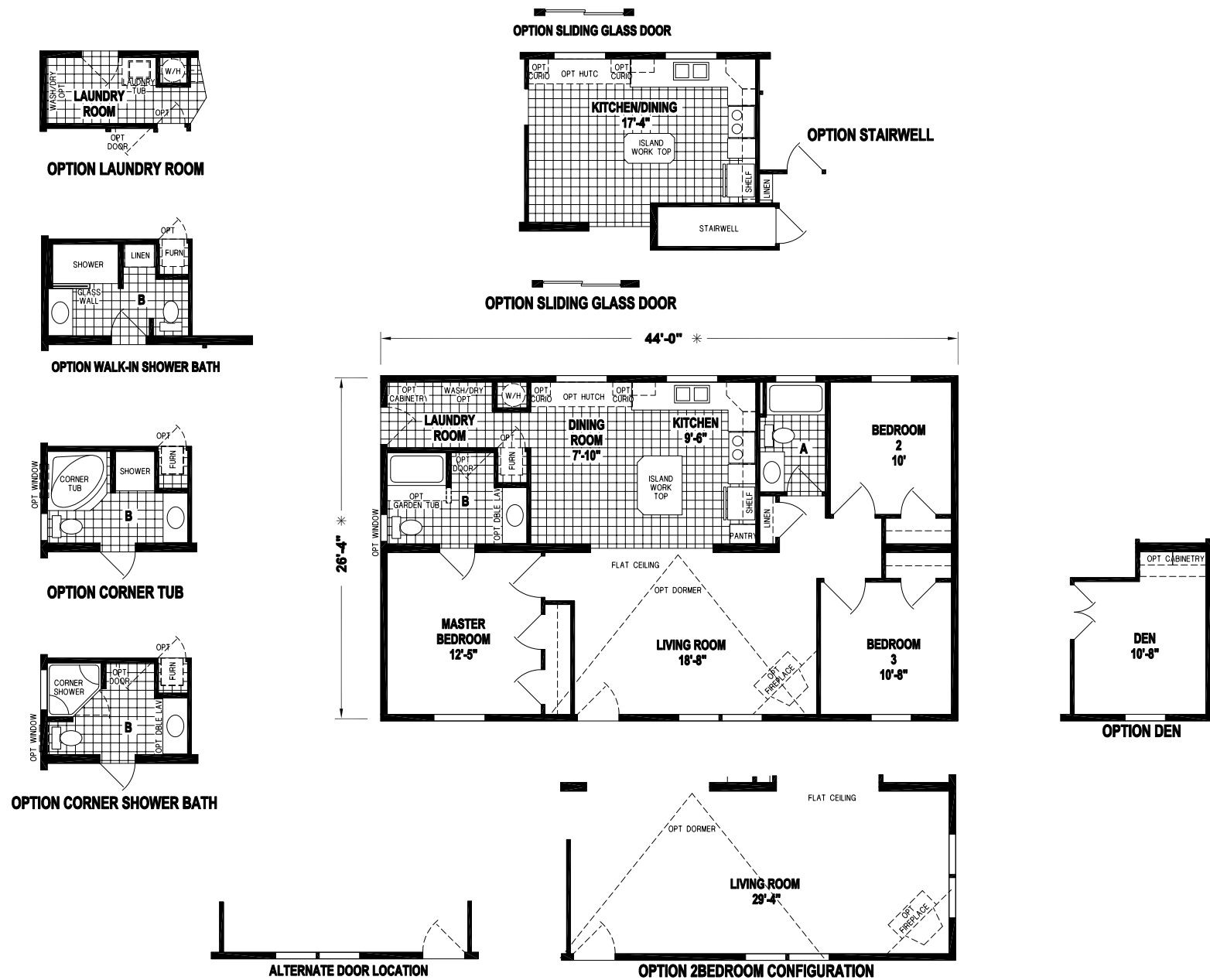
Manufactured in Leola, Pennsylvania and backed by over 65 years of manufacturing experience, a 12-month limited warranty and stellar customer service — take a look for yourself to see why the Sunwood Series by Skyline Homes is the right decision for you and your family.

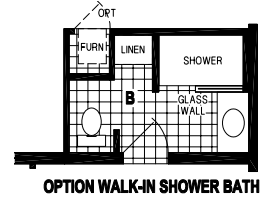


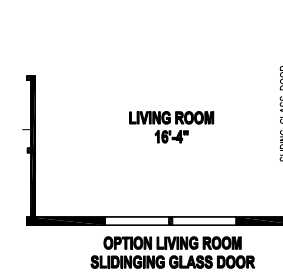
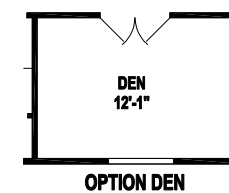
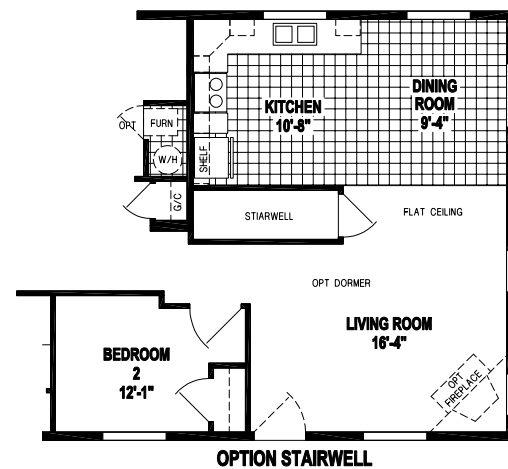
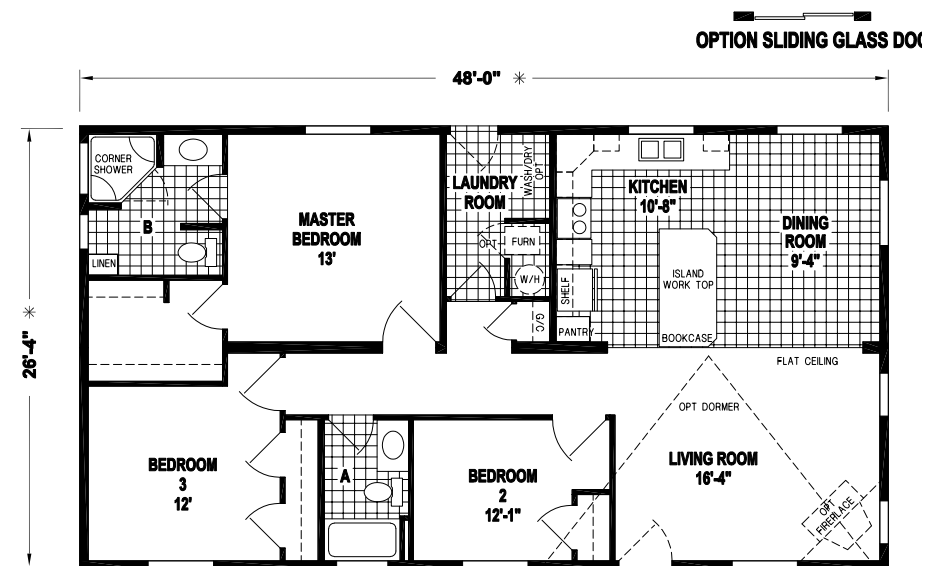
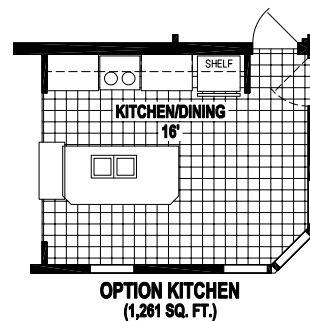
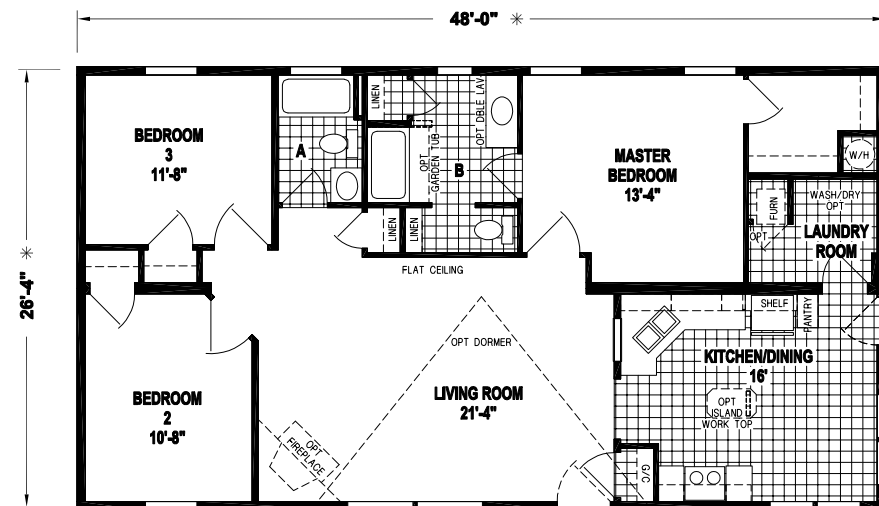
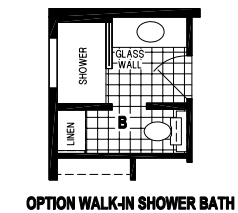


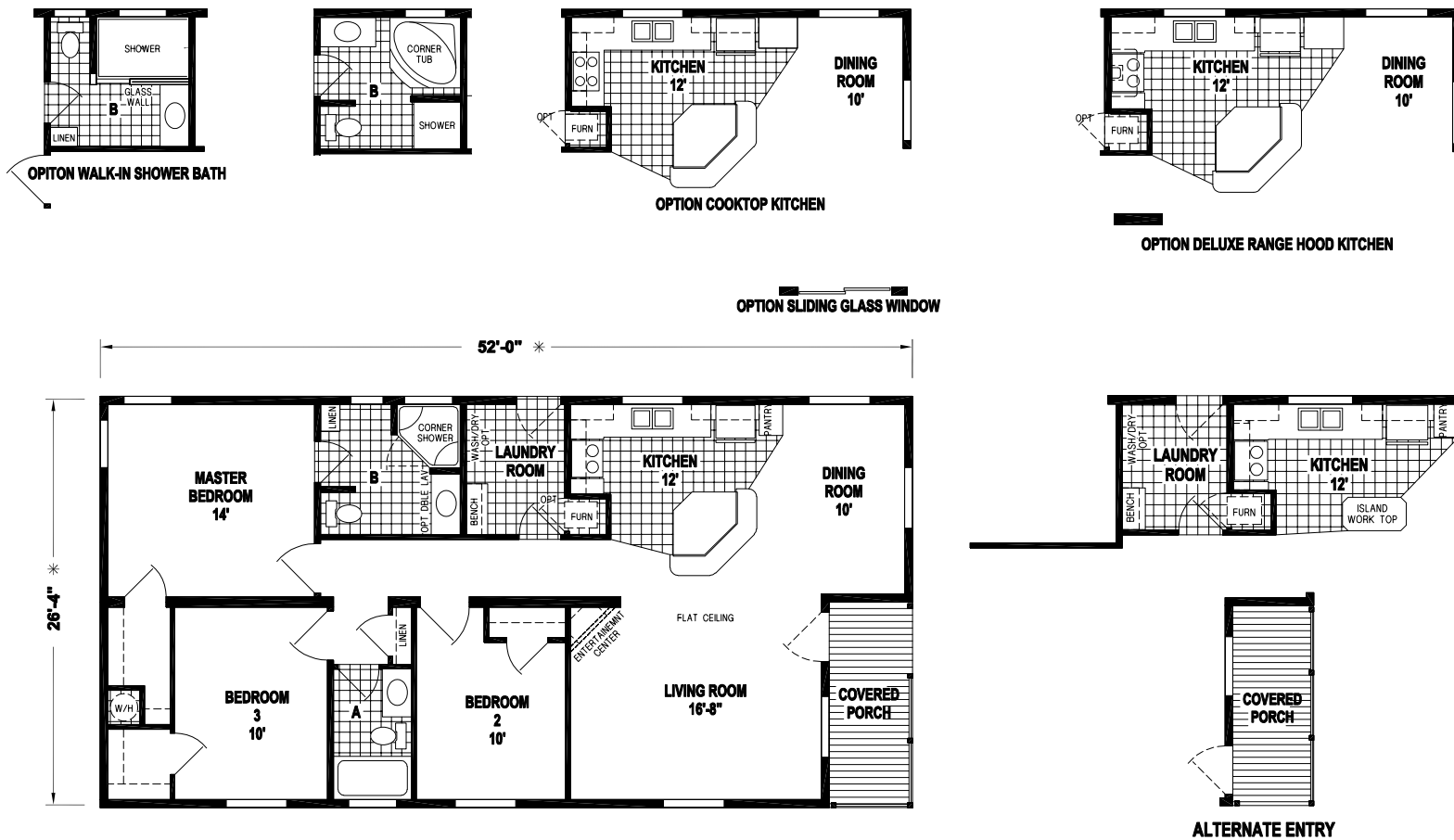
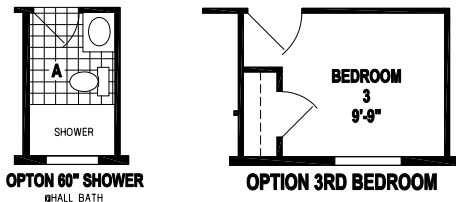
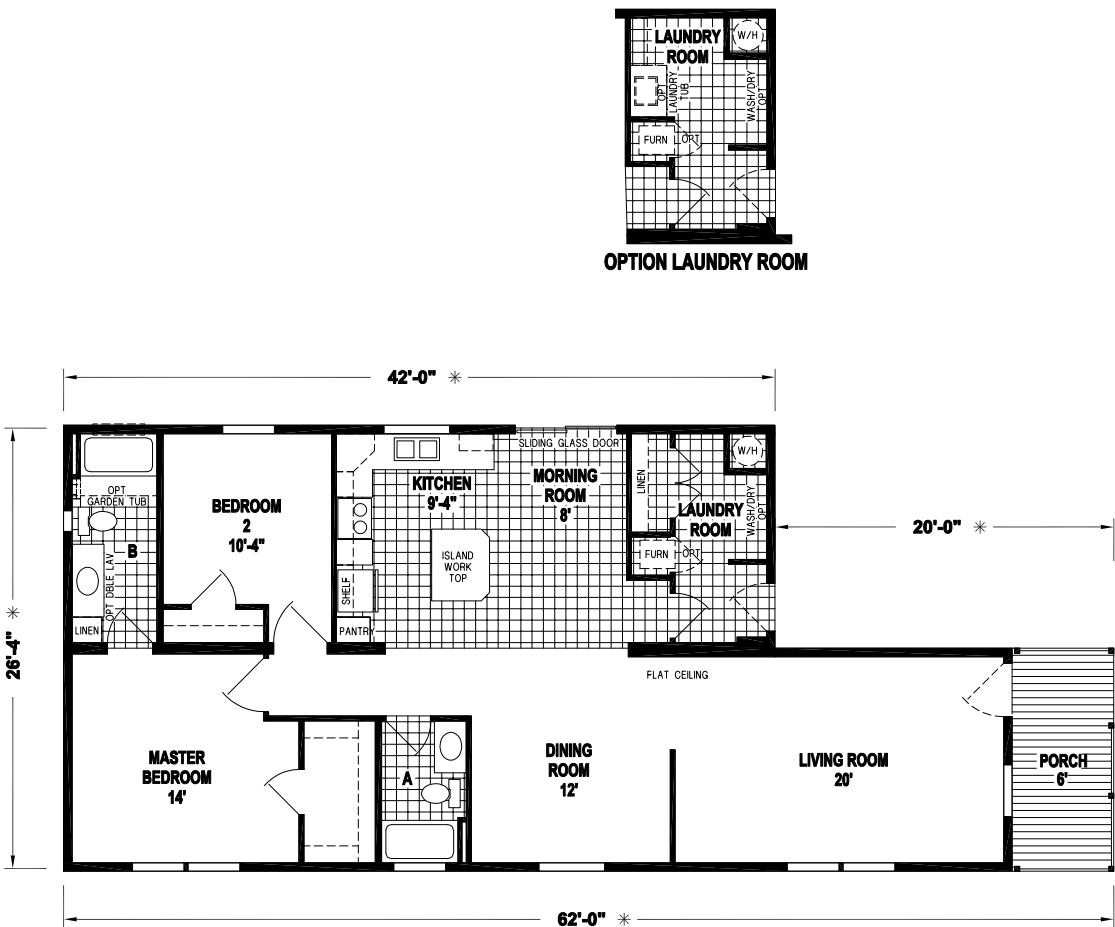






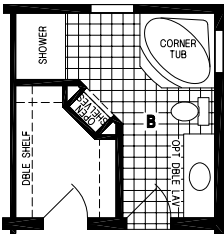
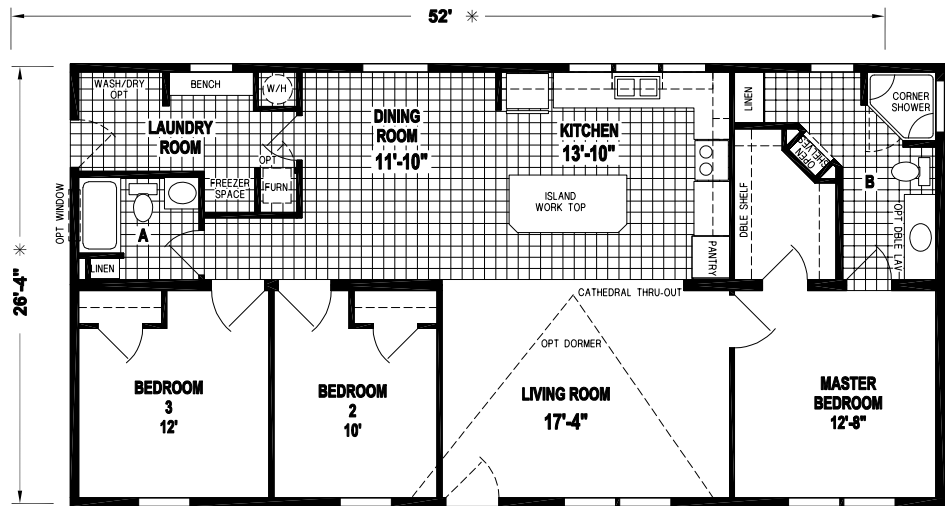






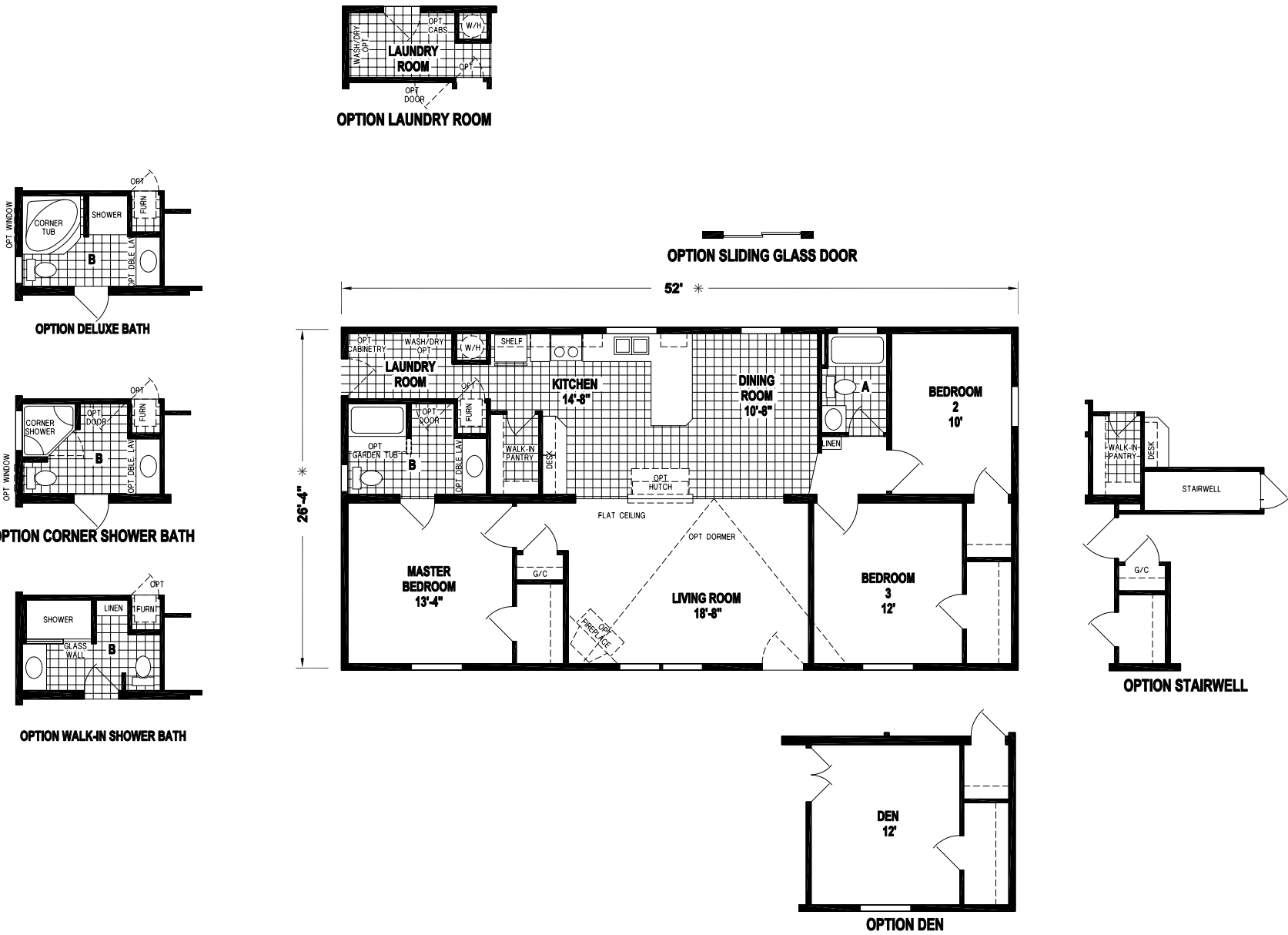
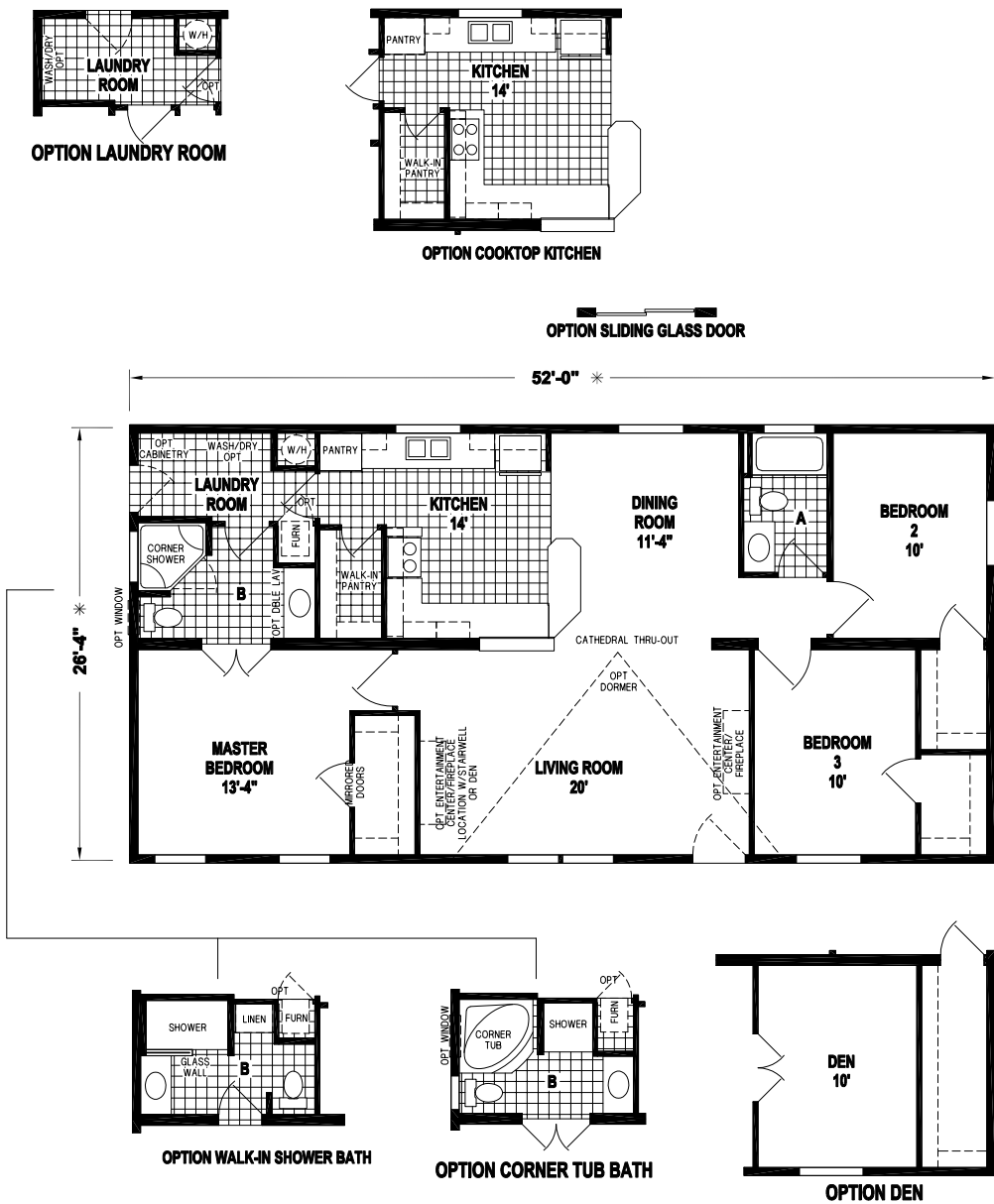


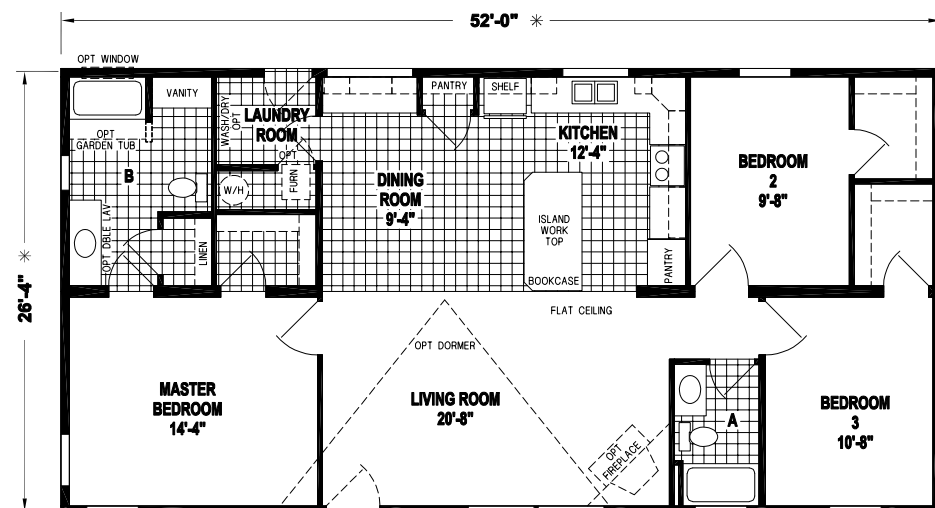
OPTION WALK-IN SHOWER BATH

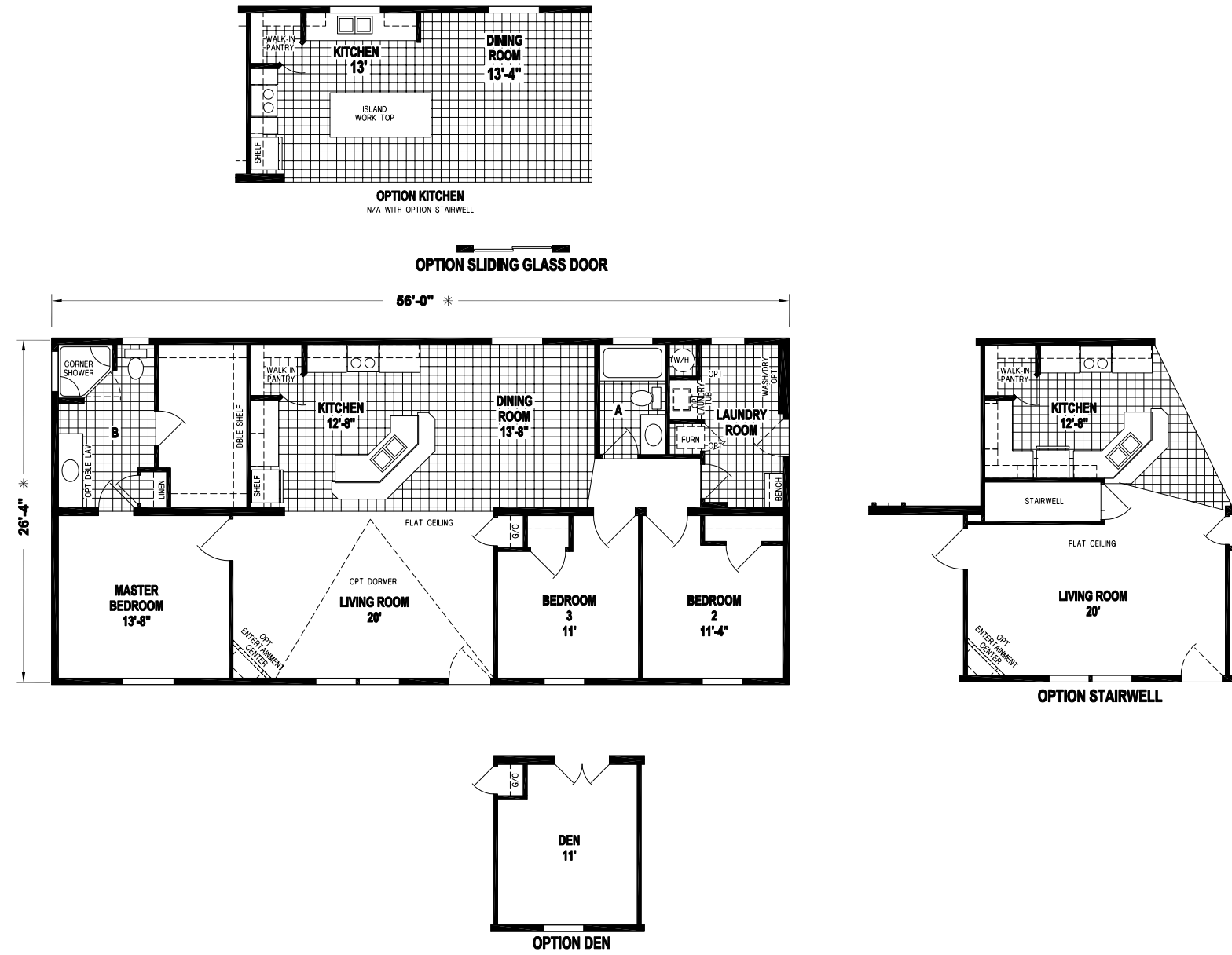
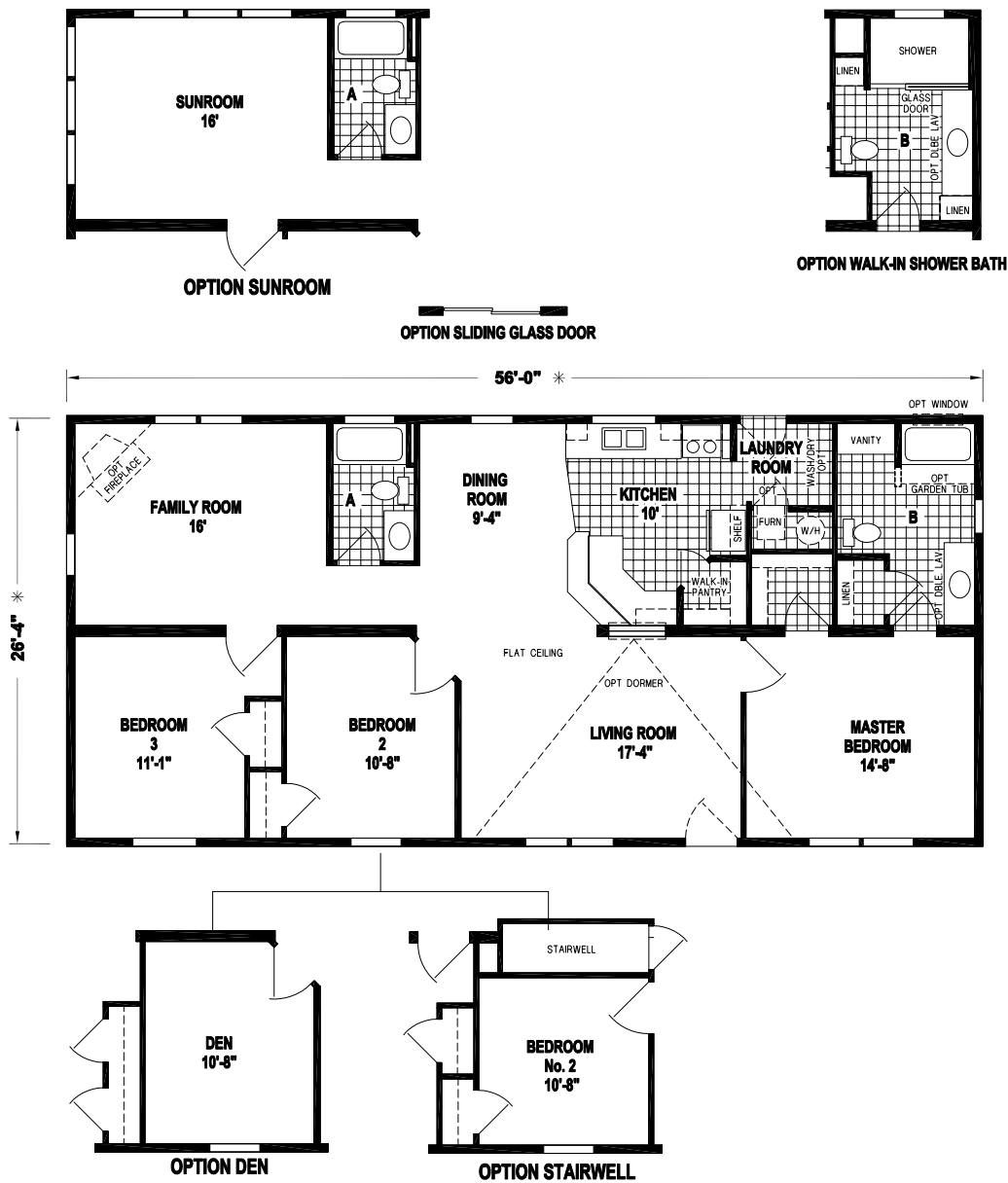


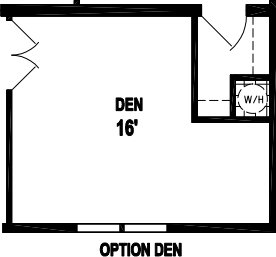
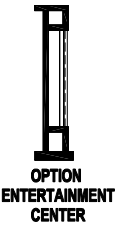
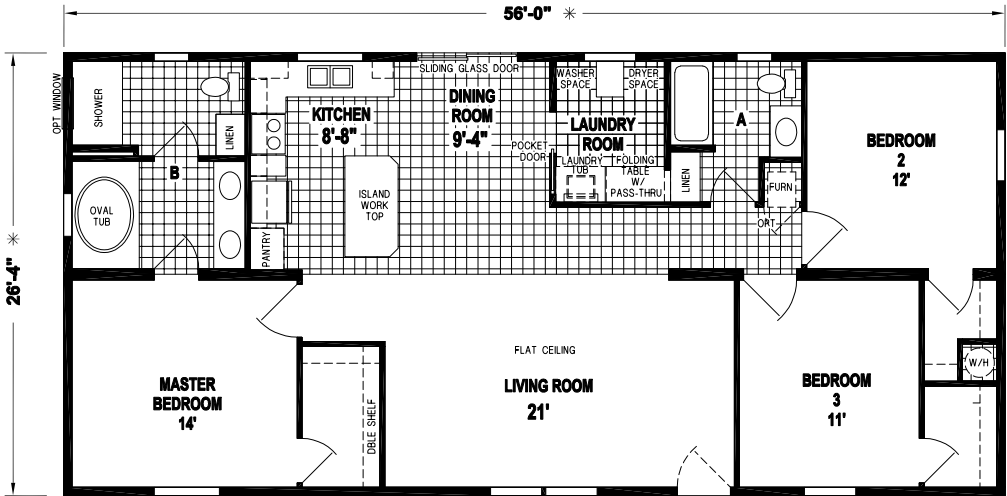
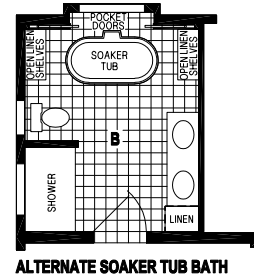
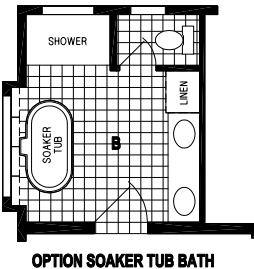
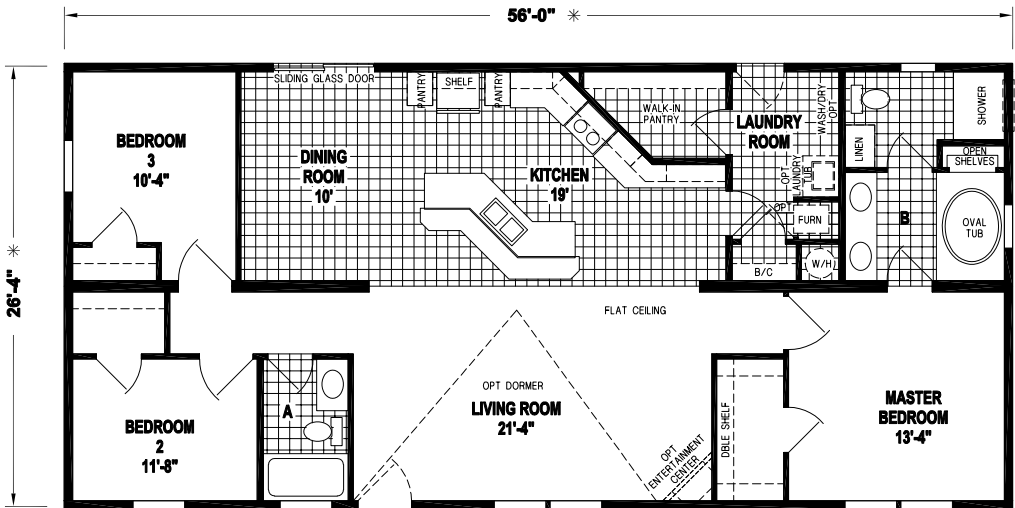
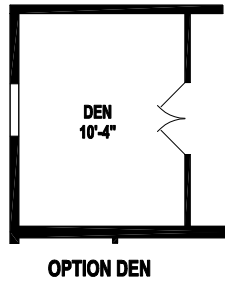
OPTION CORNER TUB BATH





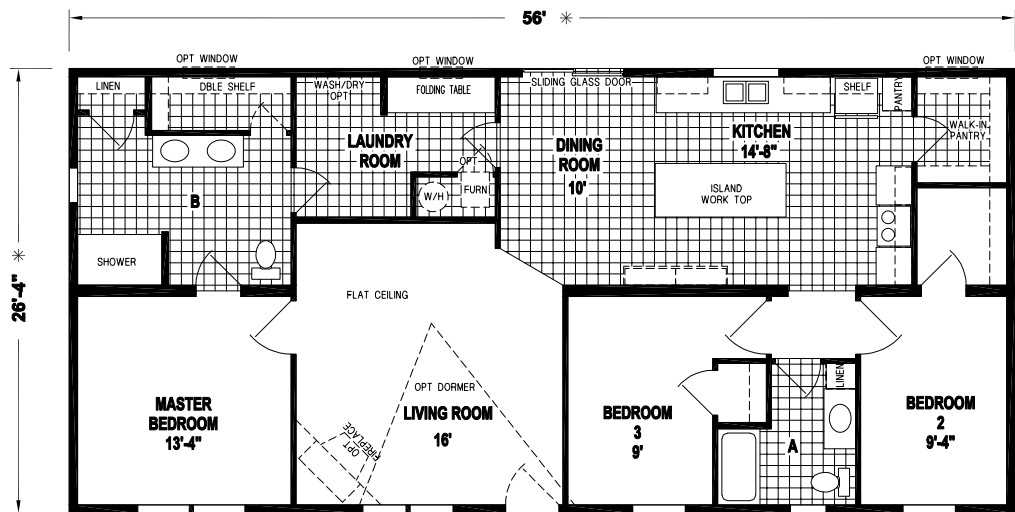
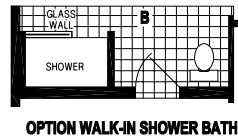
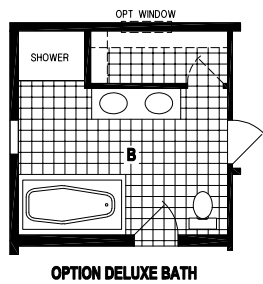


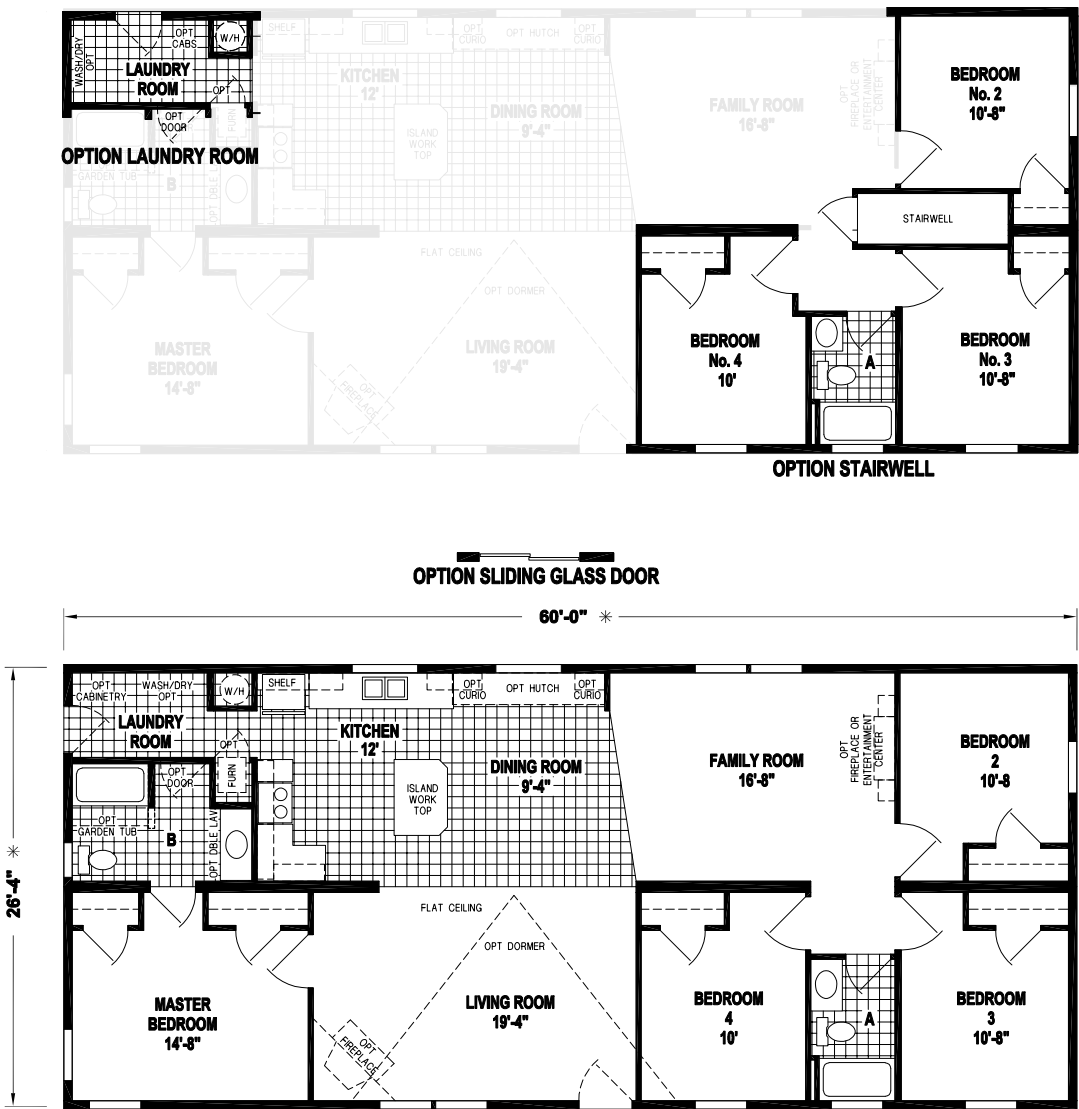
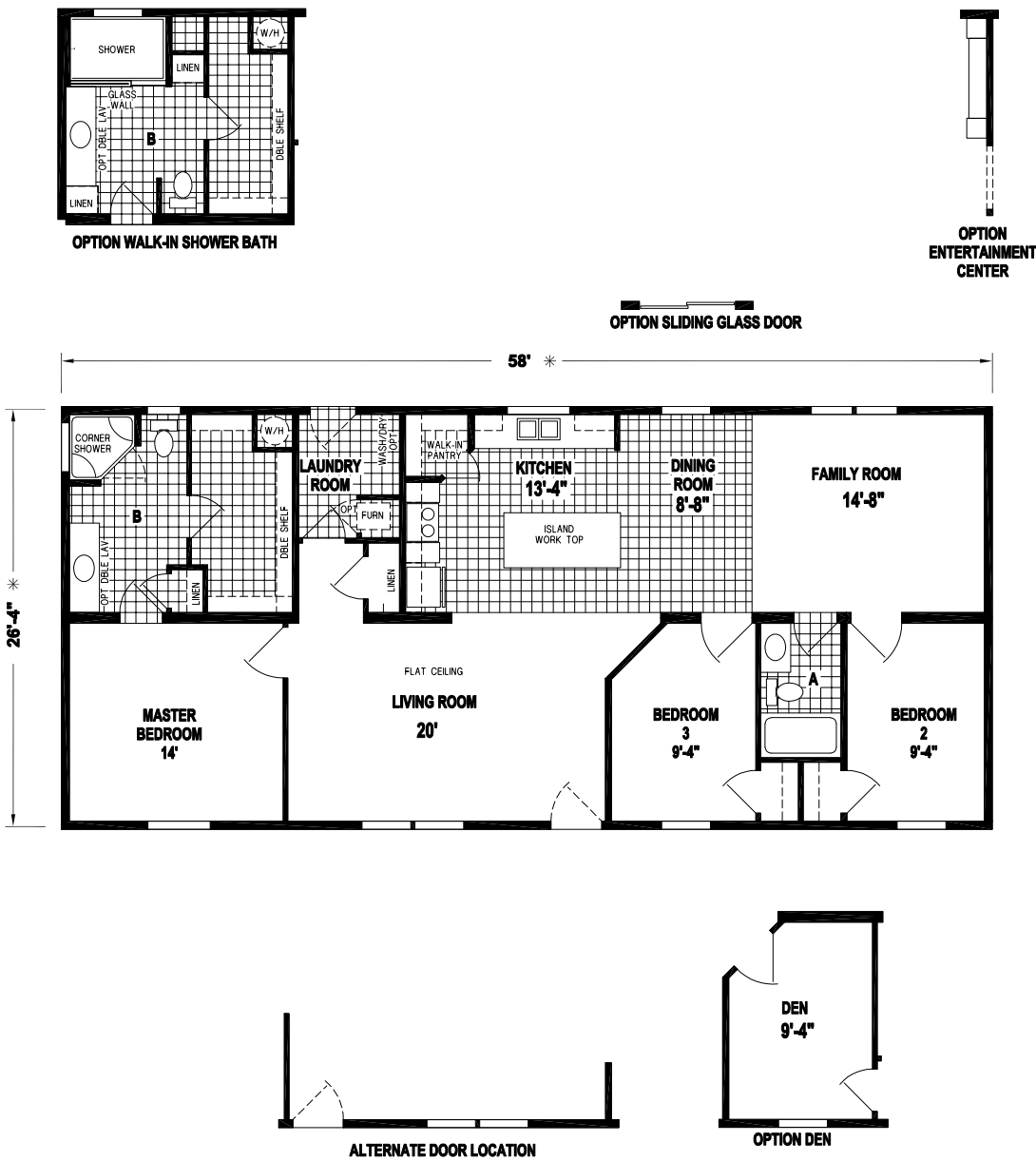


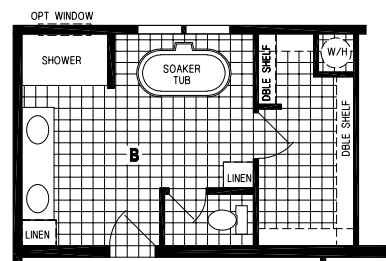


SUNWOOD
F 5 4 6 E

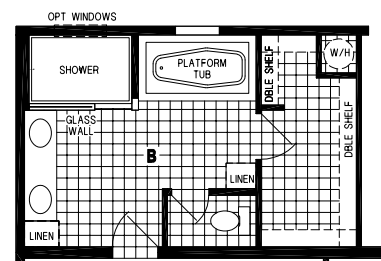
3 BED-2 BATH
1474 SQ.FT.



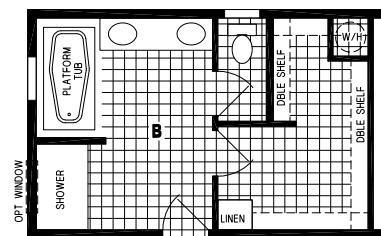




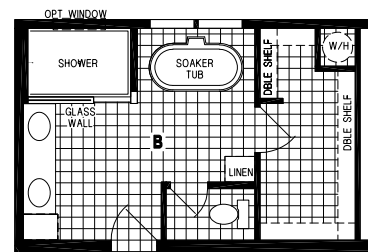
OPTION SOAKER TUB MASTER BATH



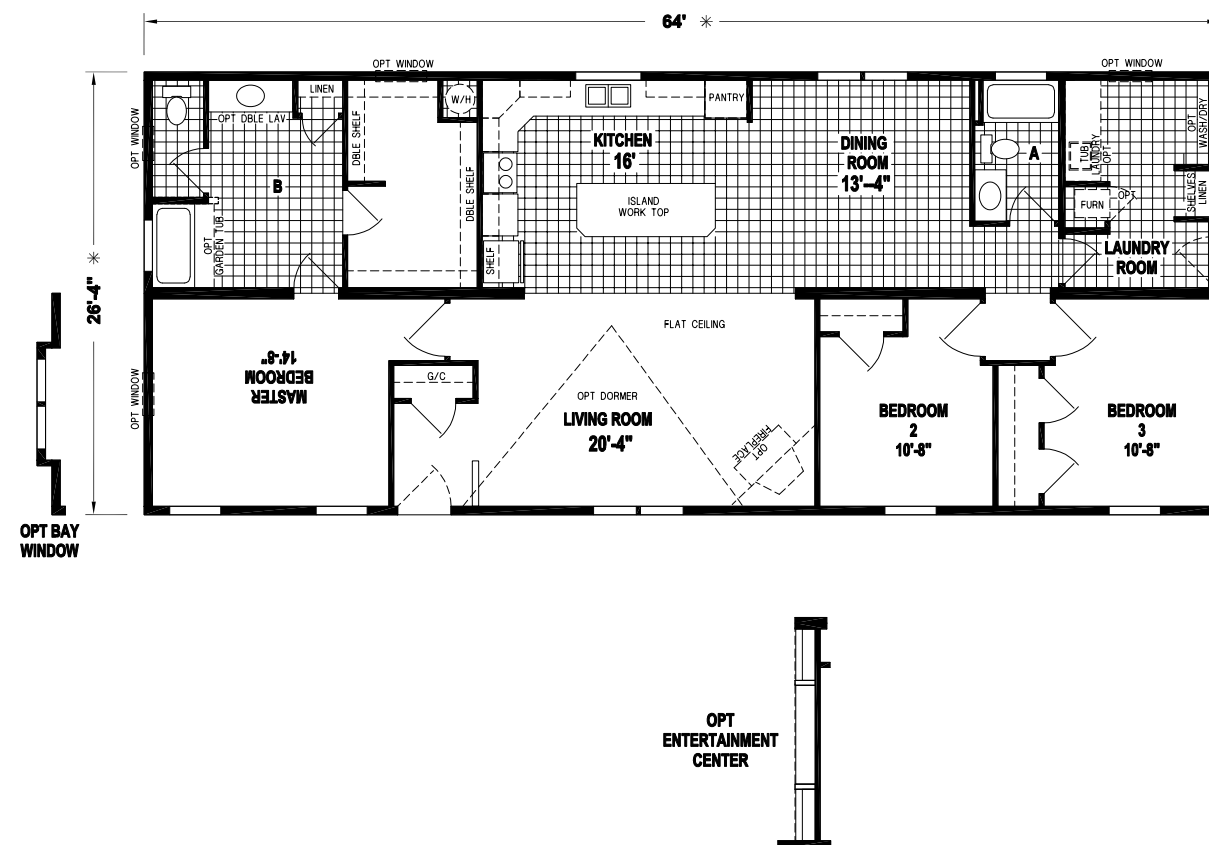
OPTION DELUXE MASTER BATH



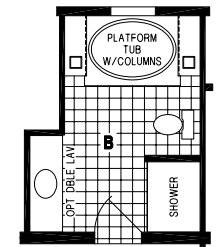
OPTION MASTER BATH



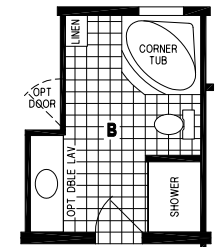
OPTION SOAKER TUB DELUXE MASTER BATH



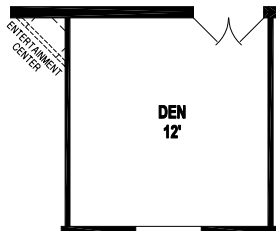
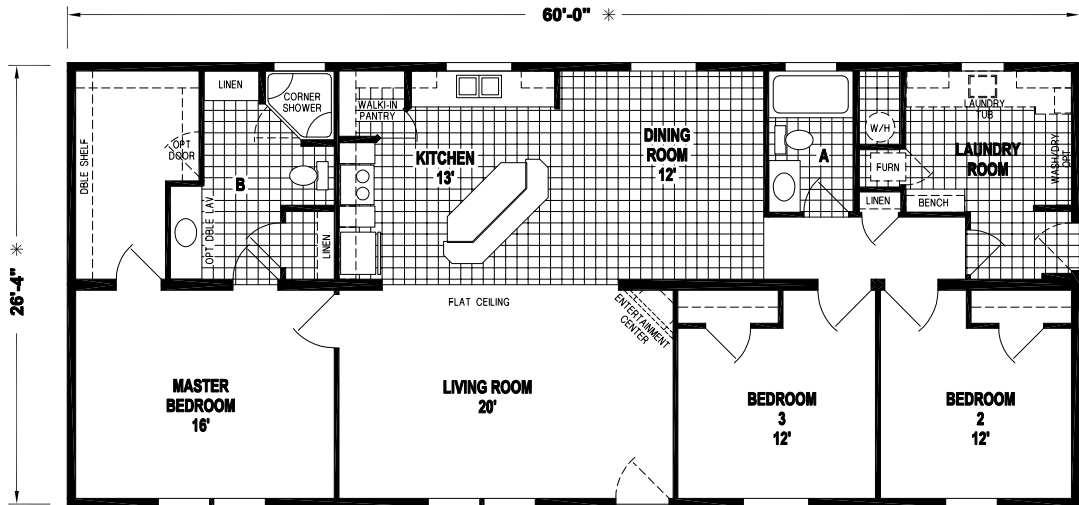
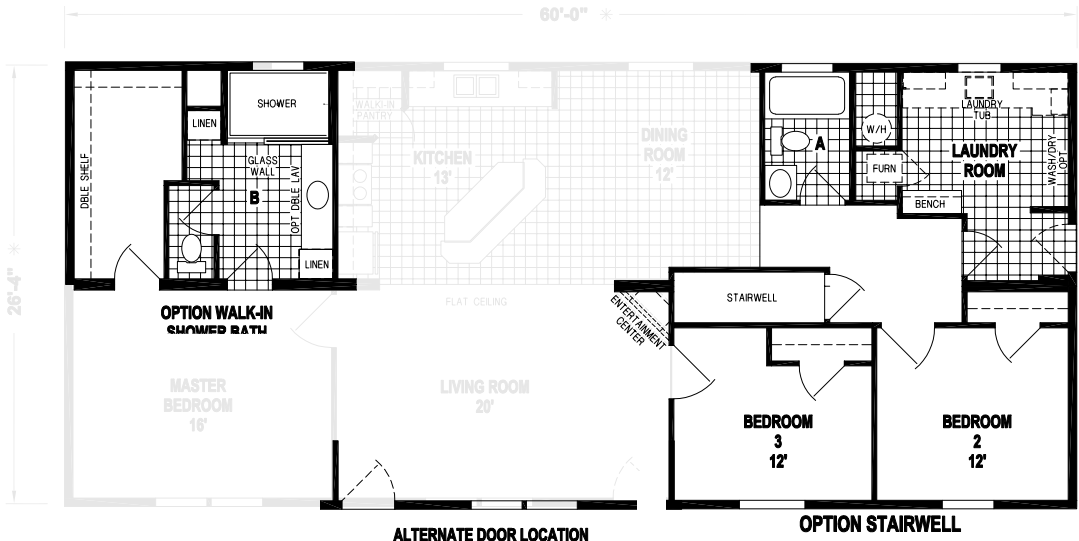
**OPT
ENTERTAINMENT
CENTER**



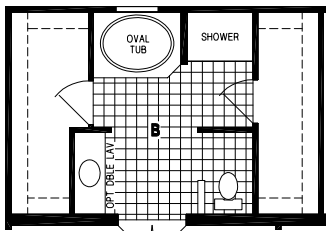
OPTION GLAMOUR BATH



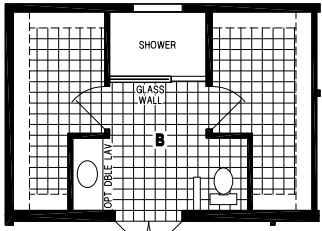
OPTION CORNER
TUB BATH



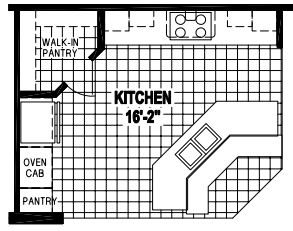
OPTION DEN



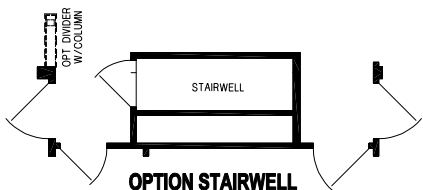
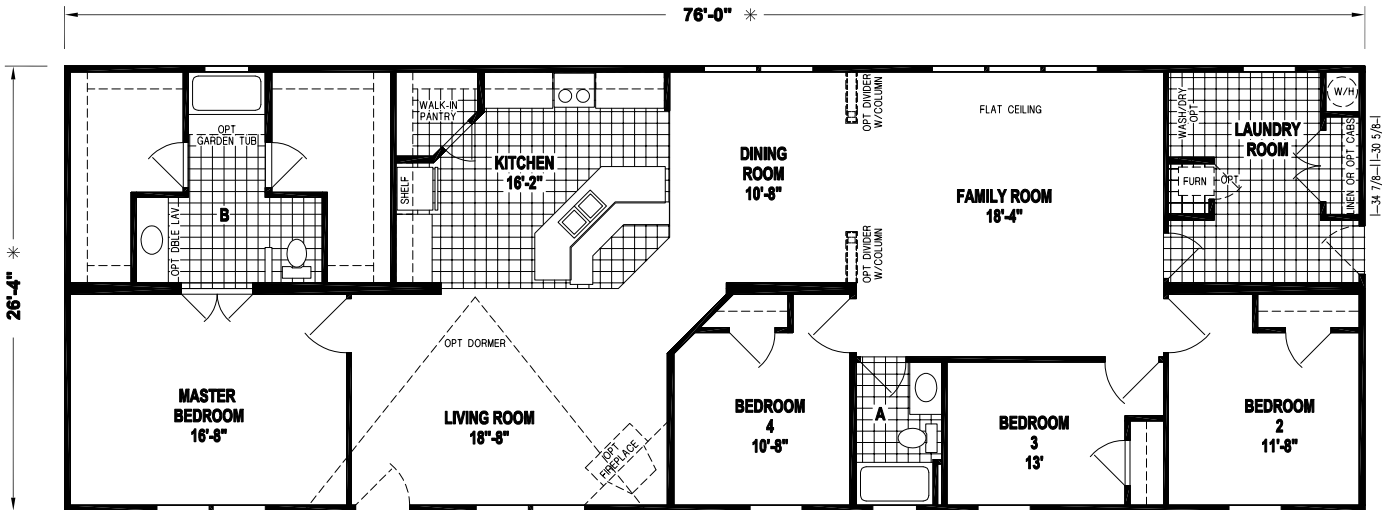
OPTION OVAL TUB BATH



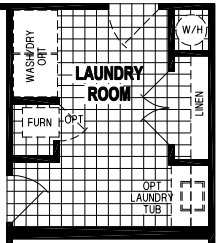
OPTION WALK-IN SHOWER BATH



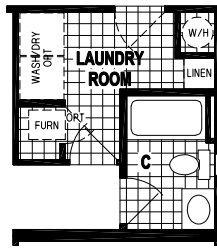
OPTION GOURMET KITCHEN



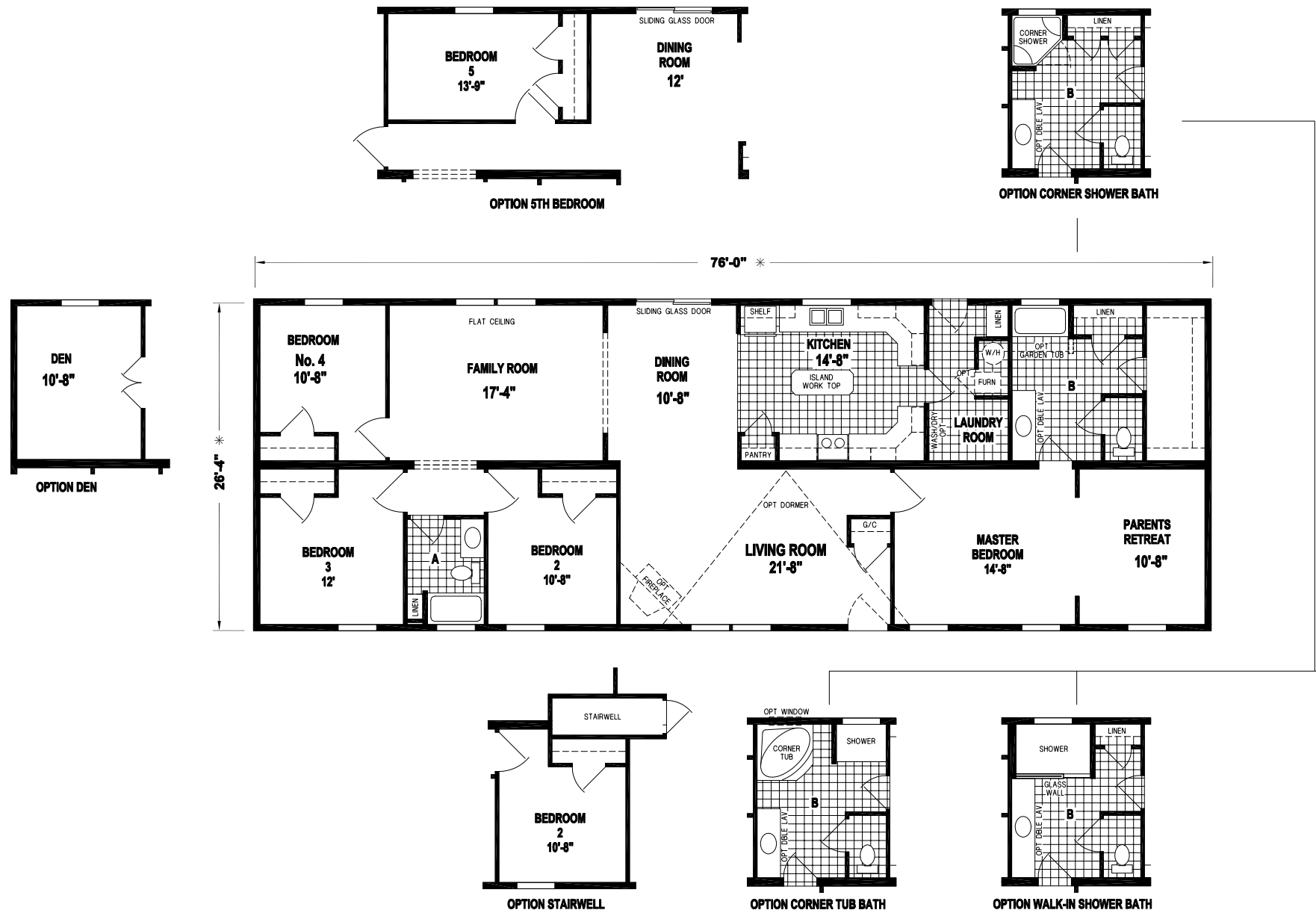
OPTION STAIRWELL



OPTION LAUNDRY ROOM



OPTION 3RD BATH





F570Q (Pages 8-9)



F540E (Pages 32-33)



F540E (Pages 32-33)



F546E (Pages 28-29)

SUNWOOD SERIES

MULTI-SECTION STANDARD FEATURES

CONSTRUCTION

- 2x6 Sidewall, 16" O. C.
- 2x6 Floor Joists, 16" O. C.
- 8' Sidewall Height
- Shingled Roof w/25-Year Shingles
- Roof Vent
- Flat Ceiling Throughout
- Code Insulation

EXTERIOR

- Vinyl Double 4" Dutch Lap Siding
- Smooth Fiberglass 6-Panel Front Door w/Sunburst Window
- Smooth Fiberglass 9-Lite Rear Door
- Deadbolt Front and Rear Door w/Keyed Alike Hardware
- Vinyl Windows with Low "E" Glass
- Window Grids
- Egress Windows in Bedrooms
- 15" Raised Panel Shutters – Front and Door Side
- Exterior Light at All Exterior Doors
- Pre-Finished Door Jambs

HEATING/UTILITY

- 30 Gallon Electric Water Heater w/Dual Element
- Gas Furnace
- 100 Amp Service Entrance
- Iron Gas Piping w/Shut-Off Valves
- Copper Wiring
- Ventilated Wire Shelving in Bedrooms

PLUMBING/ELECTRICAL

- Dinette Lights (2) Recessed
- Wall Lights in Bathroom(s)
- Recessed Lights in Kitchen
- Lighted Power Vent Fan in Bathrooms
- CO/Smoke Detector w/Battery Backup and False Alarm Control
- Exterior Receptacle w/GFI Breaker
- Electrical Box Breaker
- Water Shut-Off Valve at All Fixtures
- PEX™ Water Lines
- Wire for Dryer
- Whole House Shut Off

INTERIOR

- Carpet Pad w/Tack Strips Throughout
- Drapes w/Mini Blinds in Living Room and Master Bedroom
- Valance w/Mini Blinds in Kitchen, Bathrooms and Guest Bedrooms
- Upgrade LUX™ Vinyl Flooring Standard in Kitchen and Bathroom(s)
- 36x8 Window Where Applicable (Bathrooms)
- 24x40 Window Where Applicable (Bathrooms)
- Lever Latch Door Handles

KITCHEN

- Cabinet Doors w/Residential Hidden Hinges: Flat Panel Maple, Flat Panel Chocolate, Raised Panel Gray or Raised Panel White
- Solid Wood Face Frames
- 30" Overhead Cabinets
- Soft-Close Drawers
- Lined Overhead and Base Cabinets
- Adjustable Shelves
- Box Built Cabinets
- 2nd Shelf Kitchen Base
- 8" Deep Stainless Steel Sink w/Single-Lever Faucet and Sprayer
- Shelf Above Refrigerator
- Standard USB Port

APPLIANCES

- 18 Cu. Ft. Double Door Frost-Free Refrigerator
- 30" Deluxe Range w/Range Hood

BATHROOM(S)

- Cabinet Doors w/Residential Hidden Hinges: Flat Panel Maple, Flat Panel Chocolate, Raised Panel Gray or Raised Panel White
- Solid Wood Face Frames
- Decorative Mirror w/Swiped Edges
- Privacy Locks
- China Sink w/Overflow & Pop-Up Drain
- Elongated China Commodes
- Single-Lever Tub and Shower Diverters
- 36" High Lavs

Member:



Due to continuous product development and improvement, prices, specifications, and materials are subject to change without notice or obligation. Square footage and other dimensions are approximate. Exterior images may be artist renderings and are not intended to be an accurate representation of the home. Renderings, photos and floor plans may be shown with optional features or third-party additions.

SKYLINE®

Built in Leola, PA