

ATHENS™
PARK MODEL RVs



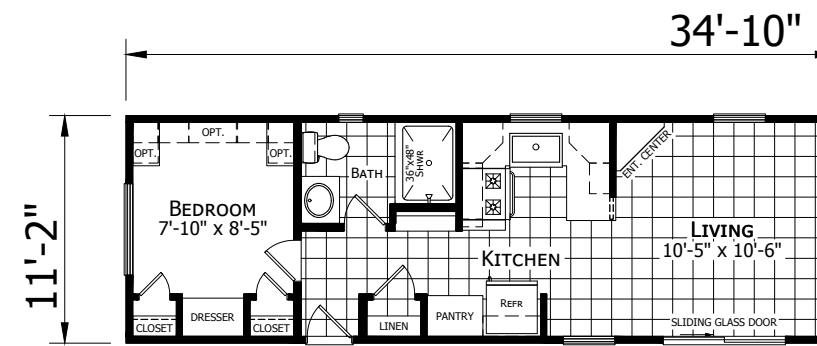
PARK MODEL SERIES



Model A969

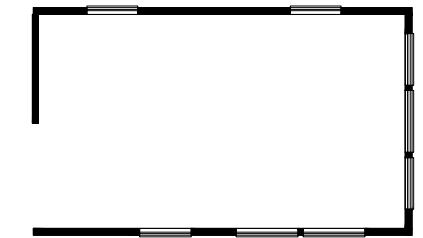
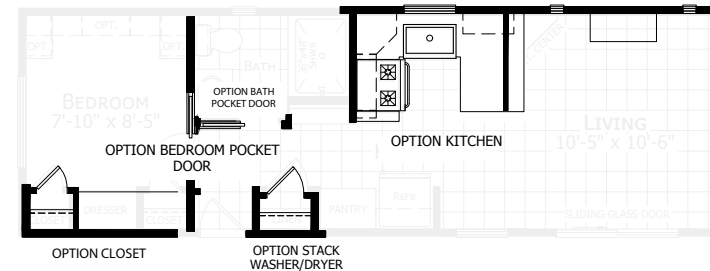
You don't have to abandon comfort to enjoy your getaway home. With an Athens™ Park Model RV, you'll have great features like high-quality cabinetry, full-size appliances, and a wide range of available options including covered porches and lofts. You'll enjoy your home away from home so much ...you may never want to leave.

With a new Athens Park Model RV, you'll enjoy coming back to your favorite vacation spot year after year ...and making your holidays and weekend getaways a time to remember.



MODEL **A900**

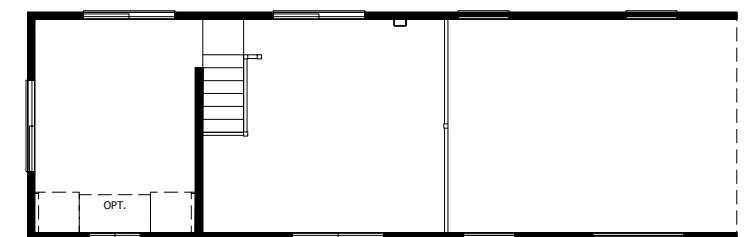
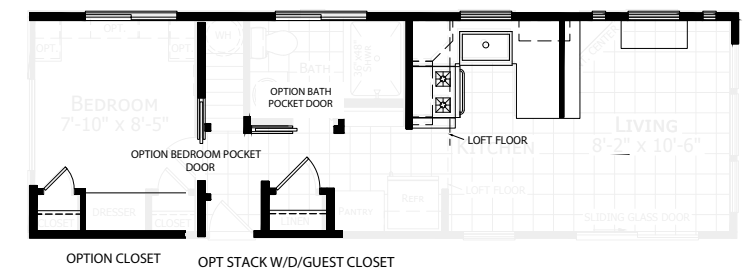
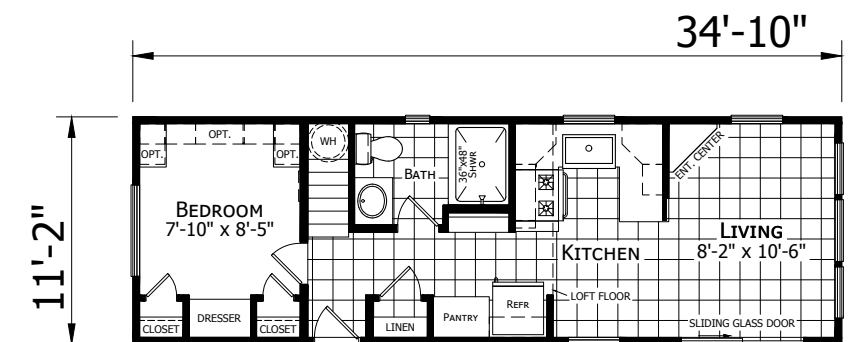
1 Bed - 1 Bath
399 sq. ft.



OPT CLERESTORY

MODEL **A900LE**

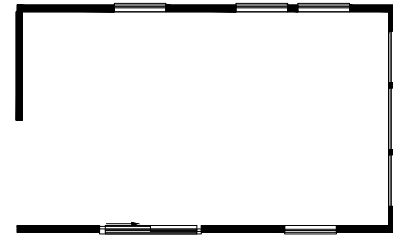
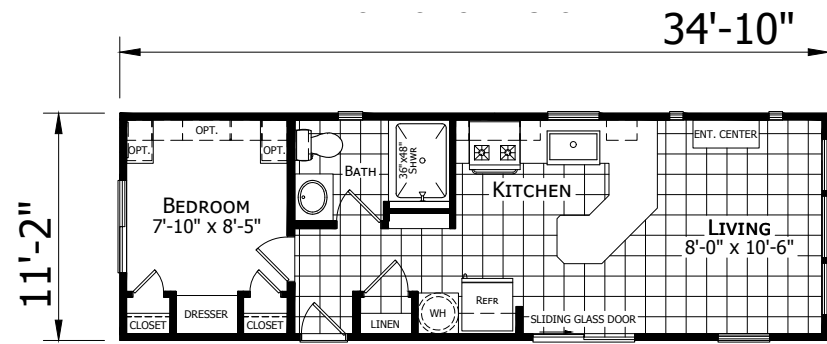
1 Bed - 1 Bath
399 sq. ft.



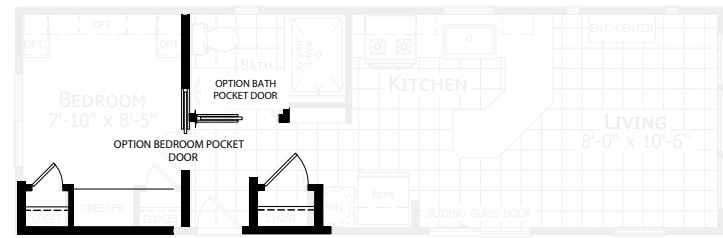
2nd LEVEL
STORAGE LOFT

MODEL **A901**

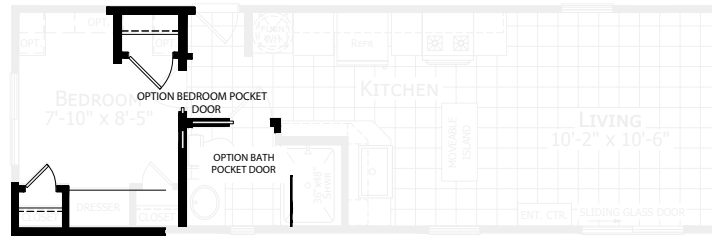
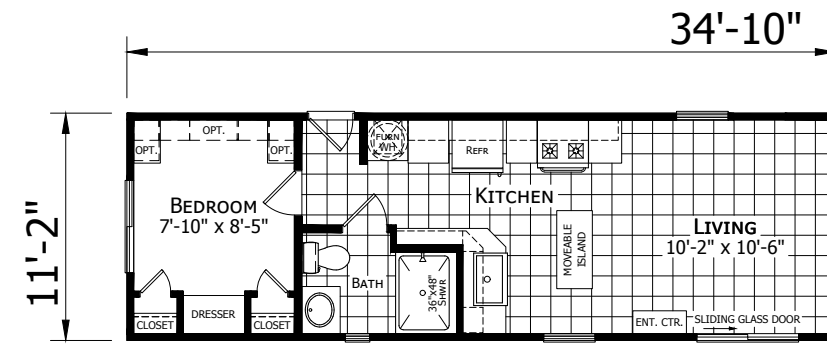
1 Bed - 1 Bath
399 sq. ft.



OPT CLERESTORY



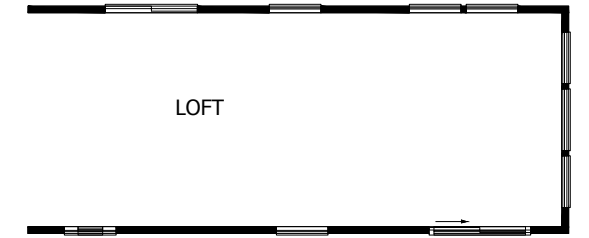
OPTION CLOSET
OPTION STACK WASHER/DRYER



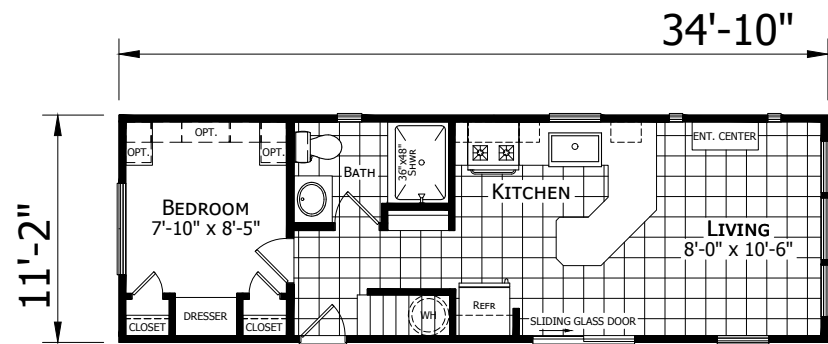
OPTION CLOSET
OPTION STACK WASHER/DRYER

MODEL **A902**

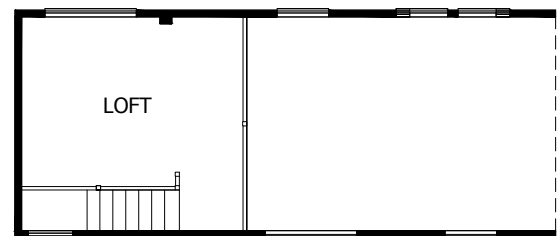
1 Bed - 1 Bath
399 sq. ft.



LOFT
OPT CLERESTORY



OPTION CLOSET
OPTION STACK WASHER/DRYER



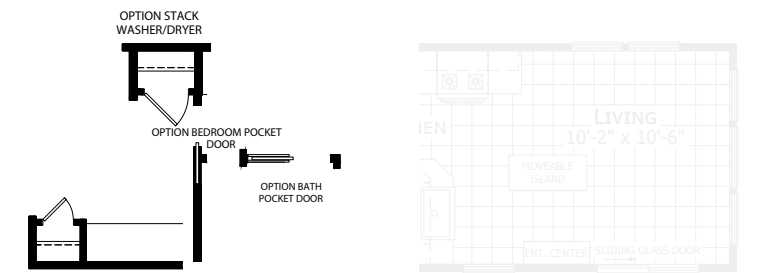
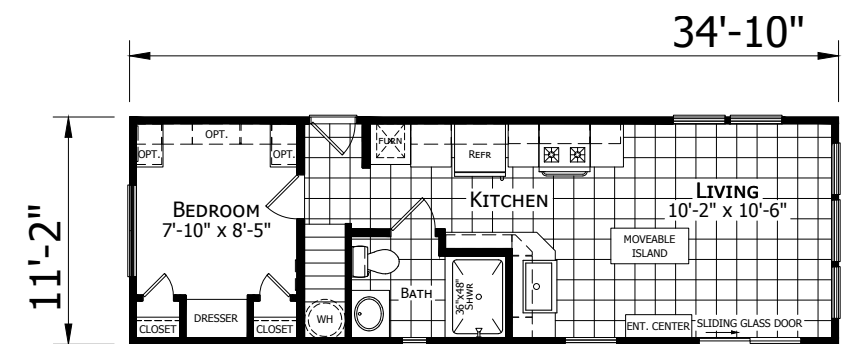
LOFT STORAGE AREA

MODEL **A901L**

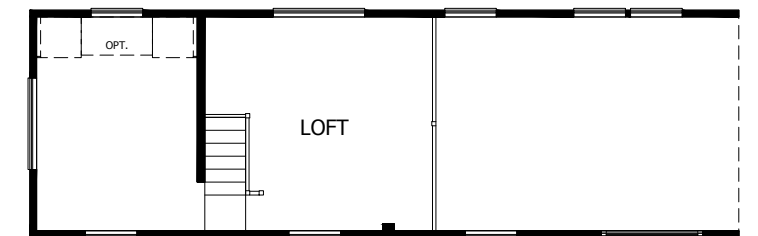
1 Bed - 1 Bath
399 sq. ft.

MODEL **A902LE**

1 Bed - 1 Bath
399 sq. ft.



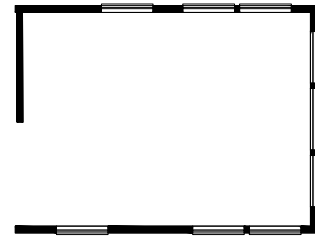
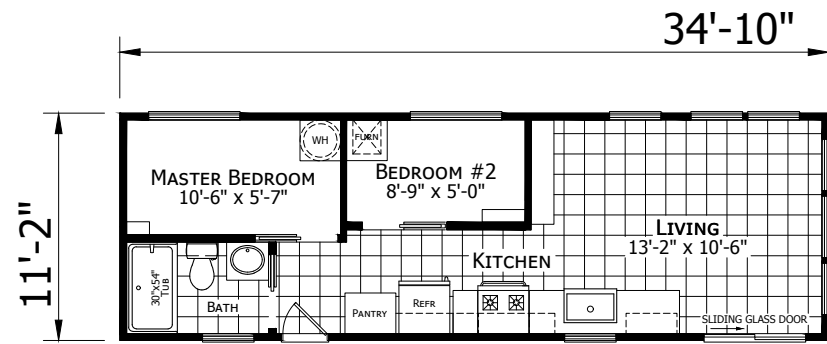
OPTION CLOSET
OPTION STACK WASHER/DRYER



2nd LEVEL
STORAGE LOFT

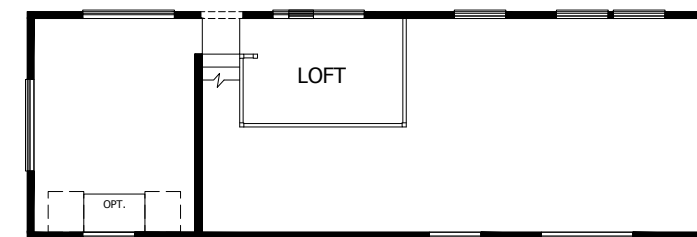
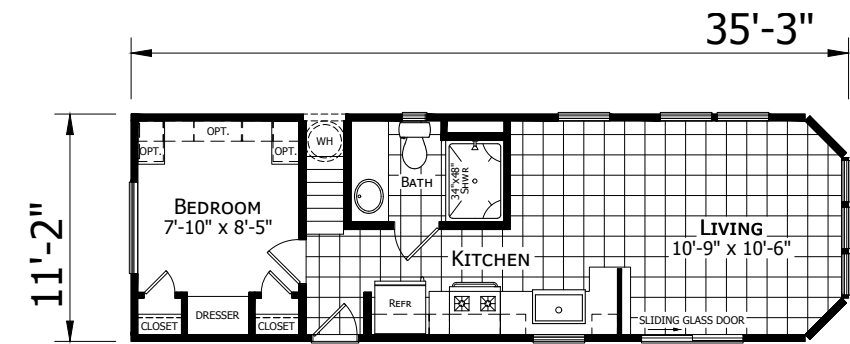
MODEL **A903**

2 Bed - 1 Bath
399 sq. ft.



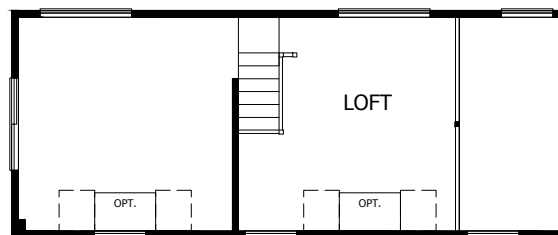
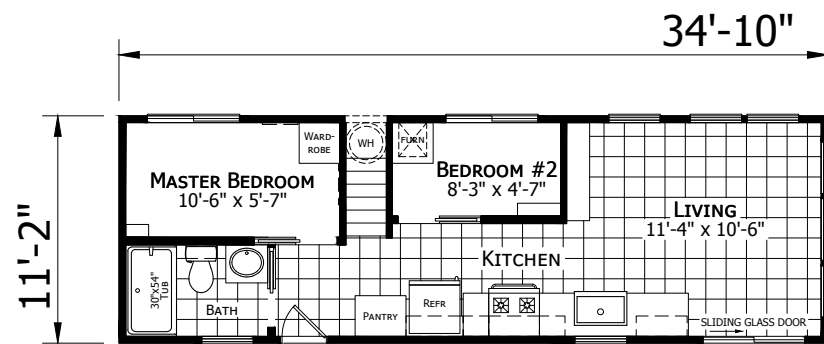
MODEL **A904L**

1 Bed - 1 Bath
399 sq. ft.



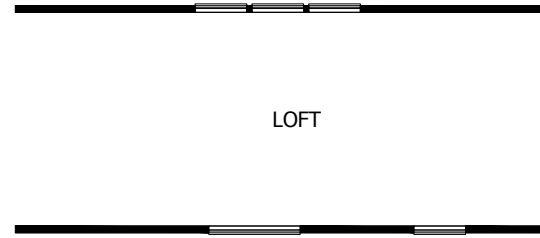
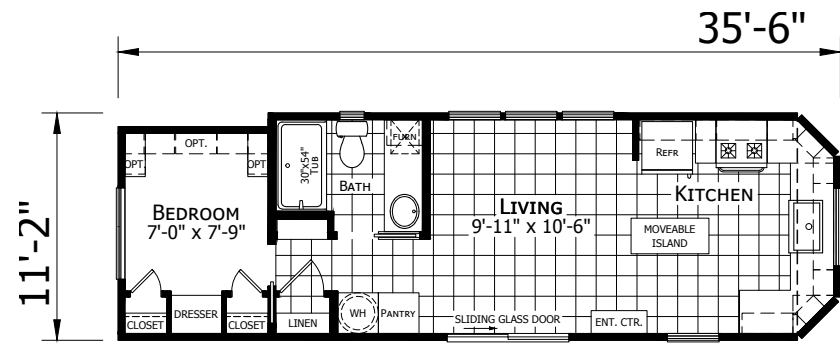
MODEL **A903LE**

2 Bed - 1 Bath
399 sq. ft.

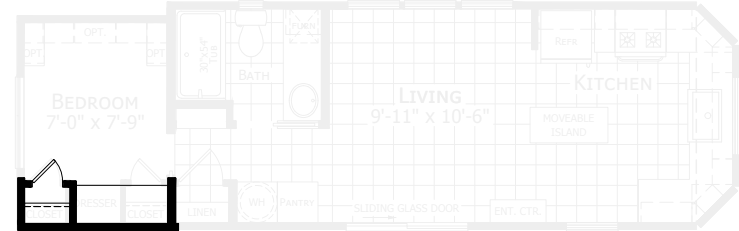


MODEL **A905**

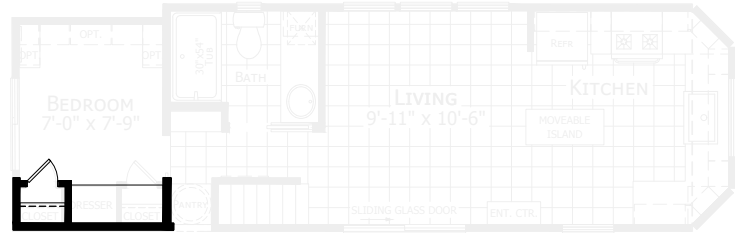
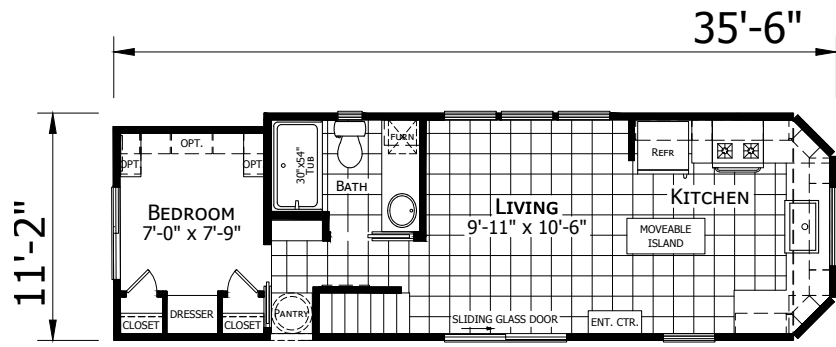
1 Bed - 1 Bath
399 sq. ft.



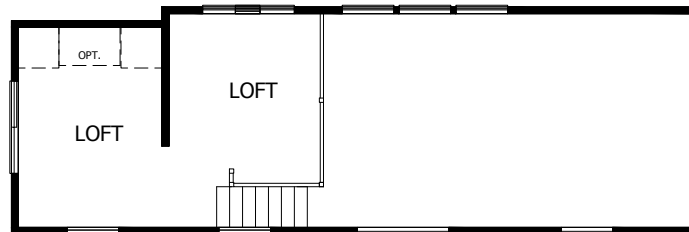
OPT CLERESTORY



OPTION CLOSET



OPTION CLOSET



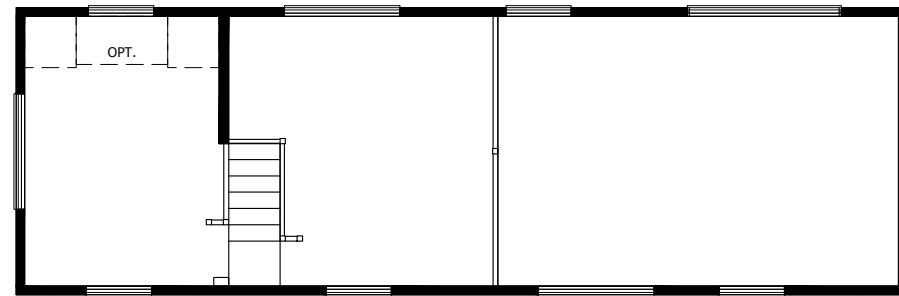
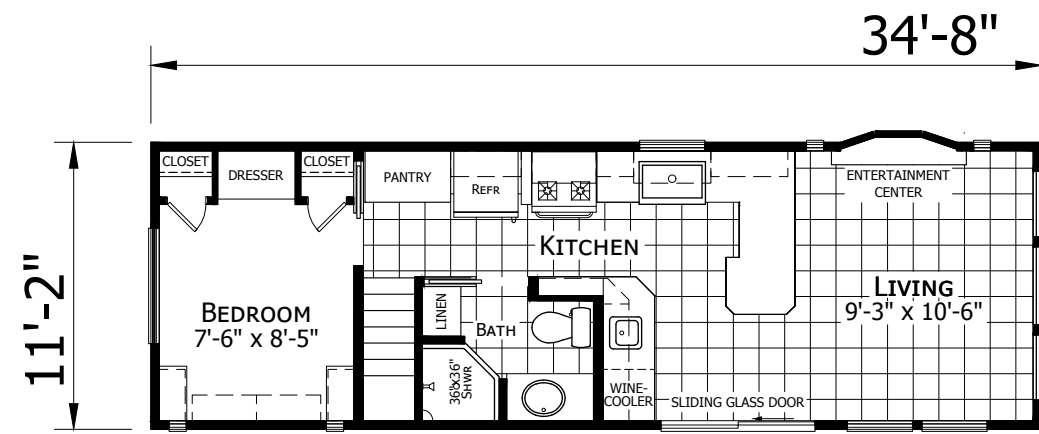
LOFT STORAGE AREA

MODEL **A905LE**

1 Bed - 1 Bath
399 sq. ft.



Model A905LE ▲



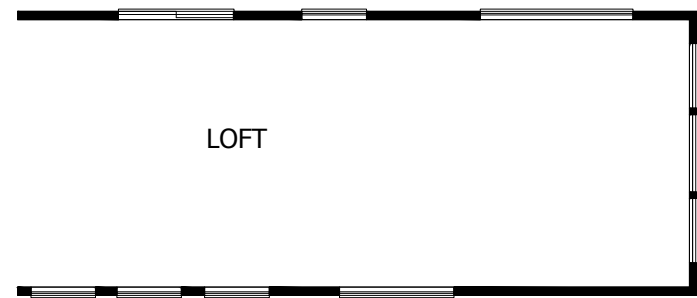
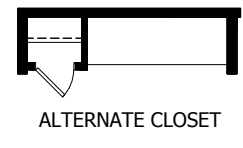
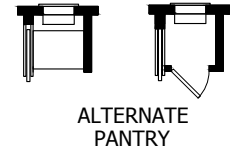
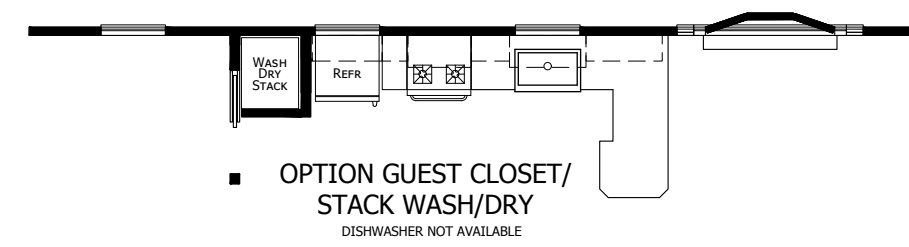
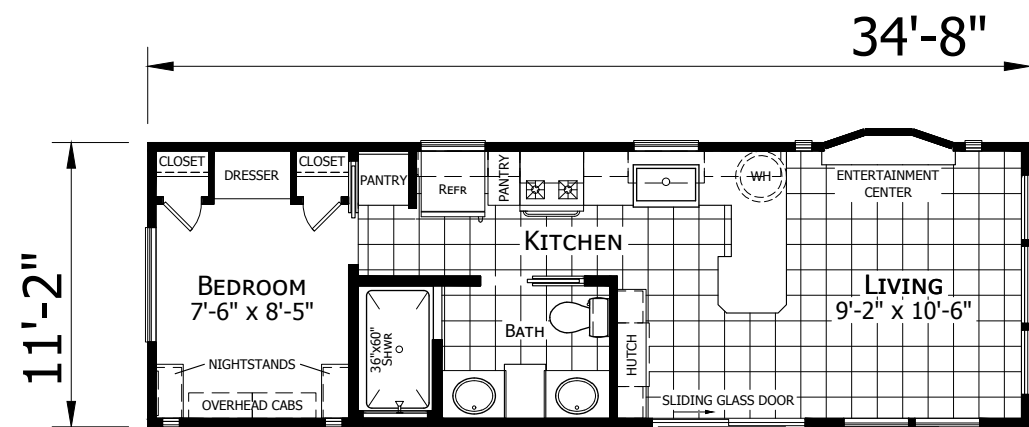
LOFT STORAGE AREA

MODEL **A967LE**

1 Bed - 1 Bath
399 sq. ft.



Model A967LE ▲



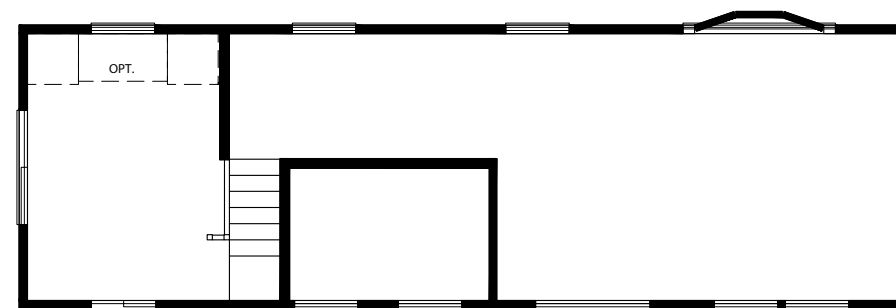
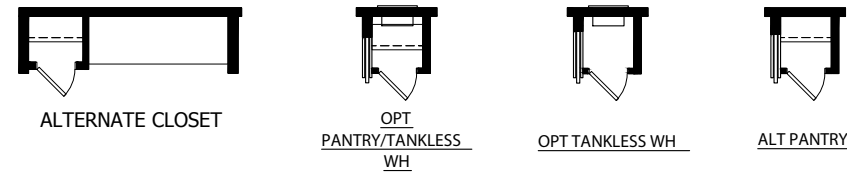
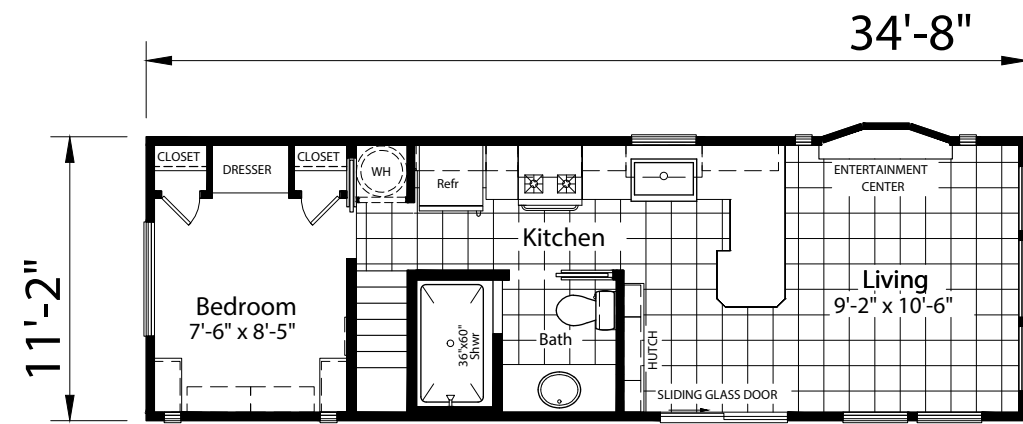
MODEL **A969**

1 Bed - 1 Bath
399 sq. ft.



Model A969 ▲

Standard Features



2nd LEVEL STORAGE LOFT

MODEL A969L

1 Bed - 1 Bath
399 sq. ft.

Energy-Saving Comfort Features:

- Insulated Tilt & Clean Single Hung Low-E Windows w/ Grids
- 36x76 Nine-Lite Steel or Patio Sliding Door — Per Print
- Rear Door - Some Models
- R-22 Fiberglass insulation in Roof
- R-11 Fiberglass Insulation in the Sidewalls & Floors
- Vented Attic w/ Vapor Barrier
- Fire Extinguisher
- 40,000 BTU Gas Furnace w/ Auto Ignition

Heavy-Duty Exterior Construction Features:

- Vinyl Lap Siding
- Pentizoid Window on Hitch End
- Heavy Composite 25-Year Shingles
- 2x6 Floor & 2x4 Sidewall Construction — 16" O.C.
- Trussed Roof Rafters
- High-density (Rodent Proof) Underbelly
- Detachable Hitch

Heavy-Duty interior Construction Features:

- High Vaulted Ceilings
- Vinyl on Gypsom Walls
- Smooth Finished Ceiling
- 5/8" OSB T&G Floor Decking
- Sealed OSB at Entry Doors & Plumbing Locations
- Cased Windows Throughout

Kitchen Features:

- 16 Cu. Ft. Refrigerator
- Full Size Gas Range
- Space Saver Microwave
- Stainless Steel Farm Sink
- Box Built Cabinets with Adjustable Shelves
- Raised Panel Cabinet Doors
- Lined Overhead Cabinets
- 6" Glass Tile Backsplash
- Chandelier in Dining Room — Most Models
- Hidden Cabinet Door Hinges
- Premium Metal Soft Close Drawer Guides
- High Pressure Laminate Countertops

Bathroom Features:

- One-piece 48" Fiberglass Shower — Most Models
- China Lavatory Sink w/ Metal Faucets
- 6" Glass Tile Backsplash
- Elongated Porcelain House Type Toilet
- Mirrored Medicine Cabinet
- Installed Paper Holder & Towel Bar
- Ledge Over Toilet — Model Specific

Bedroom Features:

- Built in Dresser
- Nightstands — Some Models
- His & Her Full Closets
- Plush Carpet with 3/8" Rebond Pad

Convenience Features:

- ANSI 119.5 Coded - RVIA Inspected
- 50 Amp Electrical Service with 35' Cord
- 20-Gallon Electric Water Heater
- No-wax Vinyl Flooring Throughout Except Bedroom
- Exterior GFCI 110 Volt Receptacle
- Smoke Detector
- Shut-off Valves Throughout
- Deluxe Overhead LED Can Lighting
- Attractive Patio Light
- Deluxe Valances
- 1.5" Wood Blinds Throughout
- Entertainment Center for Wall Hung TV — Most Models
- Cable Jacks (2 each)
- Ceiling Fan in Living Room

Popular Options

- Clerestory Dormers
- Lofts
- Washer/Dryer
- Electric Fireplace
- Porches
- Split Air System
- Cabin Features
- Glass Tile Backsplash



Due to continuous product development and improvement all prices, specifications, and materials are subject to change without notice or obligation. Square footage and other dimensions are approximate. Exterior images may be artist renderings and are not intended to be an accurate representation of the home. Renderings, photos and floor plans may be shown with optional features or third-party additions.

ATHENS™
PARK MODEL RVs

Built in Leola, PA

www.athensparkmodelrvs.com

CHAMPION®
HOME BUILDERS